

Generation mechanism of solar-like differential rotation in high-resolution simulations

H. HOTTA,¹ K. KUSANO,² AND R. SHIMADA³

¹*Department of Physics, Graduate School of Science, Chiba University
1-33 Yayoi-cho, Inage-ku, Chiba 263-8522 Japan*

²*Institute for Space-Earth Environmental Research, Nagoya University
Chikusa-ku, Nagoya, Aichi 464-8601, Japan*

³*Department of Earth and Planetary Science, The University of Tokyo
7-3-1, Hongo, Bunkyo-ku, Tokyo, 113-0033, Japan*

ABSTRACT

We analyze the simulation result shown in [Hotta & Kusano \(2021\)](#) in which the solar-like differential rotation is reproduced. The Sun is rotating differentially with the fast equator and the slow pole. It is widely thought that the thermal convection maintains the differential rotation, but recent high-resolution simulations tend to fail to reproduce the fast equator. This fact is an aspect of one of the biggest problems in solar physics called the convective conundrum. [Hotta & Kusano \(2021\)](#) succeed in reproducing the solar-like differential rotation without using any manipulation with unprecedentedly high-resolution simulation. In this study, we analyze the simulation data to understand the maintenance mechanism of the fast equator. Our analyses lead to conclusions that are summarized as follows. 1. Superequipartition magnetic field is generated by the compression, which can indirectly convert the massive internal energy to magnetic energy. 2. Extended subadiabatic region around the base of the convection zone and the efficient small-scale energy transport suppresses large-scale convection energy. 3. Non-Taylor–Proudman differential rotation is maintained by the entropy gradient caused by the anisotropic latitudinal energy transport enhanced by the magnetic field. 4. The fast equator is maintained by the meridional flow mainly caused by the Maxwell stress. The Maxwell stress itself also has a role in the angular momentum transport for fast near-surface equator (we call it the *Punching ball* effect). This study newly finds the role of the magnetic field in the maintenance of differential rotation.

Keywords: Solar convection zone(1998) — Solar differential rotation(1996) — Solar dynamo(2001) — Solar magnetic fields(1503)

1. INTRODUCTION

The Sun is rotating differentially, i.e., different latitudes have different rotation rates, which is called differential rotation. The solar rotation has a long observational history. In 1630, Christoph Scheiner found the different rotation periods between latitudes using the trajectory of the sunspots ([Paternò 2010](#)). In modern-day observations, the Doppler effect is used to measure the rotation rate (e.g., [Howard & Harvey 1970](#)). After the appearance of helioseismology that uses acoustic waves to detect the internal structure of the Sun, the internal profile of the differential rotation has been

measured ([Schou et al. 1998](#)). Fig. 1 shows one of the helioseismic results of the differential rotation $\Omega/2\pi$ from [Howe et al. \(2011\)](#), where Ω is the angular velocity. While we observe interesting features of the shear layers, i.e., tachocline at the base of the convection zone and the near-surface shear layer, one of the most prominent features of the solar differential rotation is the fast equator and slow pole. The equator and the polar region rotate in 25 and 30 days, respectively.

It has been thought that thermal convection is a key to understanding the generation mechanism of the solar differential rotation.

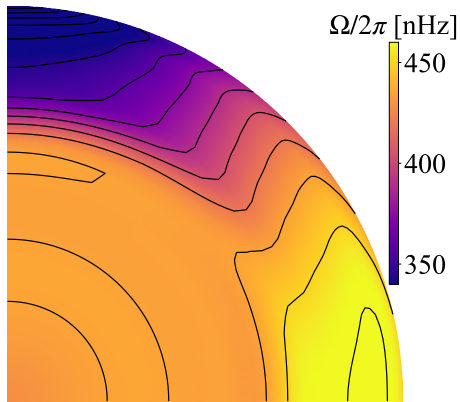


Figure 1. Inversion of the helioseismic data from Helioseismic and Magnetic Imager (HMI) satellite for the angular velocity ($\Omega/2\pi$) in the unit of nHz (Howe et al. 2011). The solid lines show the values from 340 to 460 nHz in 10 nHz increments.

Around the solar center, nuclear fusion generates thermal energy. The radiation transports the energy outward in the radiation zone in the inner part of the solar interior (radiation zone: $< 0.71R_{\odot}$, where R_{\odot} is the solar radius). In the outer part ($> 0.71R_{\odot}$, convection zone), opacity increases, and the radiation energy transport becomes inefficient. Then, the thermal convection transports the energy. Because of large Reynolds numbers, the thermal convection is turbulent. The turbulence is influenced by the Coriolis force and becomes anisotropic. Angular momentum is transported by the anisotropic turbulence, and the large-scale flow is constructed. Because the turbulence in the convection zone is highly non-linear and chaotic, scientific research with numerical simulation is an essential approach to understanding the differential rotation.

By using the numerical simulations, the generation mechanism of the solar differential rotation was thought to be understood at the beginning of the 2000s, but recent high-resolution simulations have crucial problems in reproducing the rotation observed. As a pioneering work, Gilman (1977) performed solar global convection simulations while ignoring the stratification using the Boussinesq approximation. After the standard model of the solar stratification is established (Christensen-Dalsgaard et al. 1996), global solar calculations with realistic stratification and other solar parameters are widely performed (Miesch et al. 2000; Brun & Toomre 2002; Miesch et al. 2006; Brun et al. 2011; Käpylä et al. 2014; Hotta et al. 2015a).

In general, convection with a faster (slower) rotation rate tends to show a fast equator (pole) (Gastine et al. 2013). The essential control parameter for the differential rotation is the Rossby number $Ro = v/(2\Omega_0 L)$ (Miesch 2005; Featherstone & Miesch 2015), where v , Ω_0 , and L are the typical convection velocity, angular velocity of the system, and typical spatial scale of the convection, respectively. The Rossby number measures the effect of the rotation on the convection. A system with a low Rossby number has rotationally constrained convection, which is essential to reproduce a fast equator. Low-resolution calculations in the early years of the global solar convection studies were able to reproduce the solar-like differential rotation (fast equator) because only the large-scale convection is included in their system. Higher-resolution calculations, however, have difficulties in reproducing it because small-scale turbulence is introduced and the effective convection scale, L , becomes small. This fact is problematic because the real Sun must have much smaller turbulence down to a centimeter scale. Currently, there are three numerical manipulation methods to produce the solar-like differential rotation:

1. To increase the rotation rate (Brown et al. 2008; Nelson et al. 2013; Hotta 2018).
2. To decrease the luminosity (Hotta et al. 2015a).
3. To adopt large viscosity and/or thermal conductivity (Miesch et al. 2000, 2008; Fan & Fang 2014; Hotta et al. 2016).

These manipulations aim to reduce the Rossby number. Manipulation 1 increases Ω_0 and directly reduces the Rossby number. In manipulation 2, the convection velocity v is reduced with smaller luminosity and energy flux. Manipulation 3 decreases convection velocity v and increases the effective spatial scale L with the large diffusivities. Early calculations implicitly adopt manipulation 3 because of their low resolution. While Fan & Fang (2014) find that the magnetic field may contribute to suppressing the convection velocity and decreasing the Rossby number, large thermal conductivity ($\sim 3 \times 10^{13} \text{ cm}^2 \text{ s}^{-1}$) is still required to maintain solar-like differential rotation. Because the solar angular velocity Ω_0 and the so-

lar luminosity L_{\odot} are well-determined values, we should not change these. The viscosity and the thermal conductivity are extremely small and cannot be reproduced in modern computers, and we should keep these as small as possible. We note that there should be larger turbulent diffusivities, but these should be automatically reproduced in three-dimensional simulations. In summary, we have not reproduced the solar-like differential rotation without introducing artificial effects and do not know the valid reason why the fast equator is produced in the Sun. The problem is that high resolution hinders the reproduction of the solar-like differential rotation.

This problem is one of the most critical and difficult problems in solar physics, called the convective conundrum (O'Mara et al. 2016). An observational estimate using helioseismology suggests that the convective flow in numerical simulations is much faster than in reality. Hanasoge et al. (2012) show convective energy spectra in large-scale ($\ell < 60$, where ℓ is the spherical harmonic degree). The observational estimate is more than two orders of magnitude smaller than a simulation (Misch et al. 2008). We note that the helioseismic result is still controversial, and another study shows a consistent result with the simulation (Greer et al. 2015). The problem of the previously presented differential rotation is one aspect of the convective conundrum because fast convection flow leads to a large Rossby number and a resulting fast pole. Regarding differential rotation, the observational results confirm the existence of a fast equator; thus, we are confident in the results obtained, but numerical simulations fail in reproducing the real solar differential rotation. Consequently, the numerical simulation has problems.

Hotta & Kusano (2021) (hereafter, HK21) have solved the problem in the differential rotation aspect of the convective conundrum. We carried out unprecedented high-resolution simulations, and the solar-like differential rotation, i.e., the fast equator, is reproduced without using any manipulation. In this study, we analyze the simulation result to understand the physical mechanism to maintain the solar-like differential rotation, i.e., the fast equator.

The simulations analyzed in this study are introduced in HK21¹. We solve three-dimensional magnetohydrodynamic equations in the spherical geometry (r, θ, ϕ) using the Yin-Yang grid (Kageyama & Sato 2004). The radial computational domain extends $0.71R_{\odot} < r < 0.96R_{\odot}$. The magnetohydrodynamic equations are

$$\frac{\partial \rho_1}{\partial t} = -\frac{1}{\xi^2} \nabla \cdot (\rho \mathbf{v}), \quad (1)$$

$$\begin{aligned} \frac{\partial}{\partial t} (\rho \mathbf{v}) = & -\nabla \cdot (\rho \mathbf{v} \mathbf{v}) - \nabla p_1 - \rho_1 g \mathbf{e}_r \\ & + 2\rho \mathbf{v} \times \boldsymbol{\Omega}_0 + \frac{1}{4\pi} (\nabla \times \mathbf{B}) \times \mathbf{B}, \quad (2) \end{aligned}$$

$$\frac{\partial \mathbf{B}}{\partial t} = \nabla \times (\mathbf{v} \times \mathbf{B}), \quad (3)$$

$$\rho T \frac{\partial s_1}{\partial t} = -\rho T (\mathbf{v} \cdot \nabla) s + Q_s, \quad (4)$$

$$p_1 = \left(\frac{\partial p}{\partial \rho} \right)_s \rho_1 + \left(\frac{\partial p}{\partial s} \right)_\rho s_1, \quad (5)$$

where ρ , \mathbf{v} , \mathbf{B} , s , and p are the density, velocity, magnetic field, specific entropy, and gas pressure, respectively. \mathbf{e}_r is the radial unit vector. To deal with the small perturbation $\rho_1/\rho_0 \sim p_1/p_0 \sim T_1/T_0 \sim 10^{-6}$, we separate the quantities to the zeroth order spherically symmetric values (subscript 0) and the perturbation from the background (subscript 1). The zeroth order quantities and the gravitational acceleration g are adopted from Model S (Christensen-Dalsgaard et al. 1996). The linearized equation of state is used for the pressure to deal with the small perturbation. The coefficient $(\partial p / \partial \rho)_s$ and $(\partial p / \partial s)_\rho$ are calculated with the OPAL repository (Rogers et al. 1996). We use the system rotation rate $\boldsymbol{\Omega}_0$ of the solar value, i.e., $\Omega_0 = 2.6 \times 10^{-6} \text{ s}^{-1}$ with $\boldsymbol{\Omega}_0 = \Omega_0 (\cos \theta \mathbf{e}_r - \sin \theta \mathbf{e}_\theta)$, where \mathbf{e}_θ is the colatitudinal unit vector.

We use the reduced speed of sound technique (RSST: Hotta et al. 2012b, 2015a). The effective speed of sound is reduced by a factor of ξ . We keep the adiabatic reduced speed of sound to 3 km s^{-1} throughout the convection zone.

The heating term Q_s at the entropy equation (eq. (4)) is expressed with two radial flux den-

¹ Statistical data are available at <https://doi.org/10.5281/zenodo.5919257>

sities as

$$Q_s = -\frac{1}{r^2} \frac{\partial}{\partial r} [r^2 (F_{\text{rad}} + F_{\text{art}})], \quad (6)$$

$$F_{\text{rad}} = -\kappa_r \frac{dT_0}{dr}, \quad (7)$$

$$F_{\text{art}} = L_{\odot} \left(\frac{r}{r_{\text{max}}} \right)^2 \exp \left[-\left(\frac{r - r_{\text{max}}}{d_{\text{art}}} \right)^2 \right], \quad (8)$$

where F_{rad} and F_{art} are the radiative flux and the artificial energy flux. For the radiative energy flux F_{rad} , we use the diffusion approximation, and the radiative diffusion coefficient is adopted from Model S. Because we do not include the photosphere where the radiation extracts the energy, in this calculation, we need an artificial energy flux around the top boundary. We extract the solar luminosity L_{\odot} from the top boundary $r = r_{\text{max}} = 0.96R_{\odot}$. The depth of the cooling layer is defined as $d_{\text{art}} = 2H_p(r_{\text{max}})$, where $H_p(r_{\text{max}}) = 9.46$ Mm is the pressure scale height at $r = 0.96R_{\odot}$.

The magnetohydrodynamic equations are solved with R2D2 (Radiation and RSST for Deep Dynamics) code (Hotta et al. 2019; Hotta & Iijima 2020, HK21) with the fourth-order space centered difference and the four-step Runge–Kutta time integration. To maintain the numerical stability, we use the slope-limited artificial diffusivity suggested by Rempel (2014) for all variables. We use $h = 2$ for the parameter for the artificial diffusivity shown in eq. (10) of Rempel (2014).

Because the whole sphere is covered with the Yin–Yang grid, we only need the radial boundary condition. We adopt the stress-free and impenetrable boundary condition both at the top and bottom boundaries for the flow. The magnetic field is radial and horizontal at the top and the bottom boundaries, respectively. The density and entropy perturbations are symmetric about the radial boundaries.

We perform four cases, Low, Middle, High, and High-HD. The basic parameters are summarized in Table 1. The High and High-HD cases have the same number of grid points. The High-HD case does not include the magnetic field. The magnetic field is included in the other cases. The calculations continue for 4000 days. The period between 3600–4000 days is used in the following analysis unless otherwise noted. The typical time spacing $\Delta t = 100$ s

and 3 million time steps are integrated for the High case.

Table 1. Summary of calculations.

Case	No. of Grids $N_r \times N_{\theta} \times N_{\phi} \times N_{\text{YY}}^{\dagger}$	Magnetic field
Low	$96 \times 384 \times 1152 \times 2$	Yes
Middle	$192 \times 768 \times 2304 \times 2$	Yes
High	$384 \times 1536 \times 4608 \times 2$	Yes
High-HD	$384 \times 1536 \times 4608 \times 2$	No

[†] We convert the Yin–Yang grid to the spherical geometry for analyses. In the spherical geometry, the number of grid is $N_r \times 2N_{\theta} \times 4N_{\phi}/3$

3. RESULT

3.1. Overall structure

In this subsection, the overall convection and magnetic field are discussed. Figs. 2 – 7 show the overall structure of the radial velocity and the radial magnetic field. Figs. 2, 4, and 6 show the radial velocity v_r at $r = 0.95R_{\odot}$, $0.9R_{\odot}$, and $0.85R_{\odot}$, respectively. Figs. 3, 5, and 7 show the radial magnetic field B_r at $r = 0.95R_{\odot}$, $0.9R_{\odot}$, and $0.85R_{\odot}$, respectively. The results from Low (panels a, d), Middle (panels b, e), and High (panels c, f) cases are shown in these figures. The panels d, e, and f show zoomed views indicated by a white dashed box in panel a. The radial velocity at $r = 0.95R_{\odot}$ (Fig. 2) shows a typical convection pattern, i.e., thin concentrated downflows surrounded by broad upflows. Two effects cause this pattern. The first effect is stratification. Because the solar convection zone is gravitationally stratified, the upper layer has a lower gas pressure. A rising fluid parcel expands because of the stratification, while the descending parcel contracts. This asymmetry of the upflows and downflows cause the typical convection pattern. In addition, we should see a boundary effect at this depth. A wall exists at $r = 0.96R_{\odot}$ where the radial motion stops. This process leads to diverging and converging motions in the upflows and downflows, respectively. The convection patterns in the Low case (Figs. 2a and d) are similar to previous calculations (Miesch et al. 2008) i.e., the smallest scale is the downflow lane. In the High case, we can see smaller-scale structures even in the

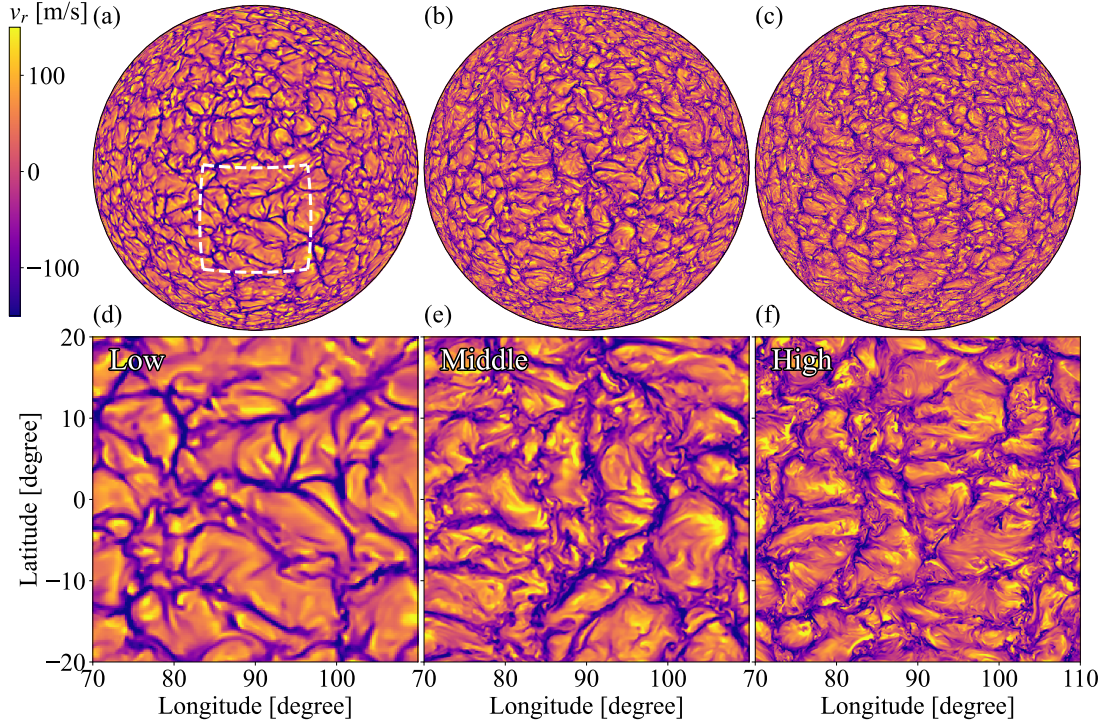


Figure 2. Radial velocity v_r at $r = 0.95R_\odot$ in Low (panels a, d), Middle (panels b, e), and High (panels c, f) cases are shown. The lower panels (d, e, f) show the subset of the calculation domain indicated by the white dashed box in panel a. Movie is available at <https://youtu.be/GXwnHIOJxvY>.

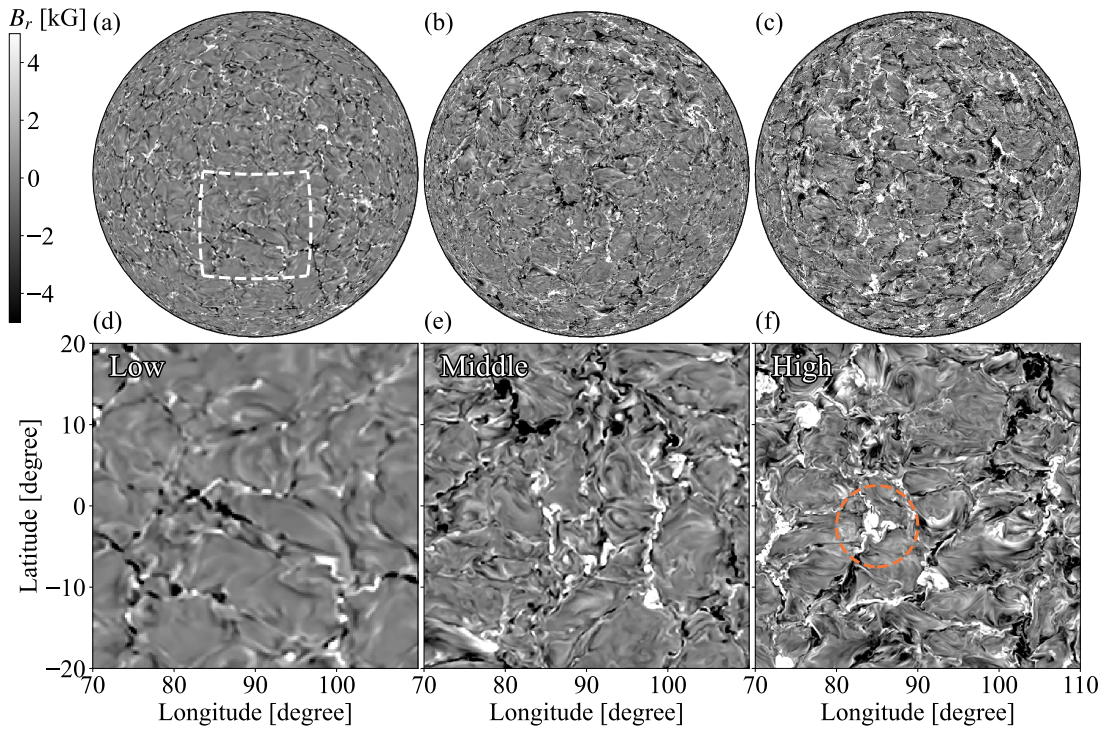


Figure 3. The radial magnetic field B_r at $r = 0.95R_\odot$ is shown. The format is the same as Fig. 2. Movie is available at <https://youtu.be/ULPPKKGwJNw>.

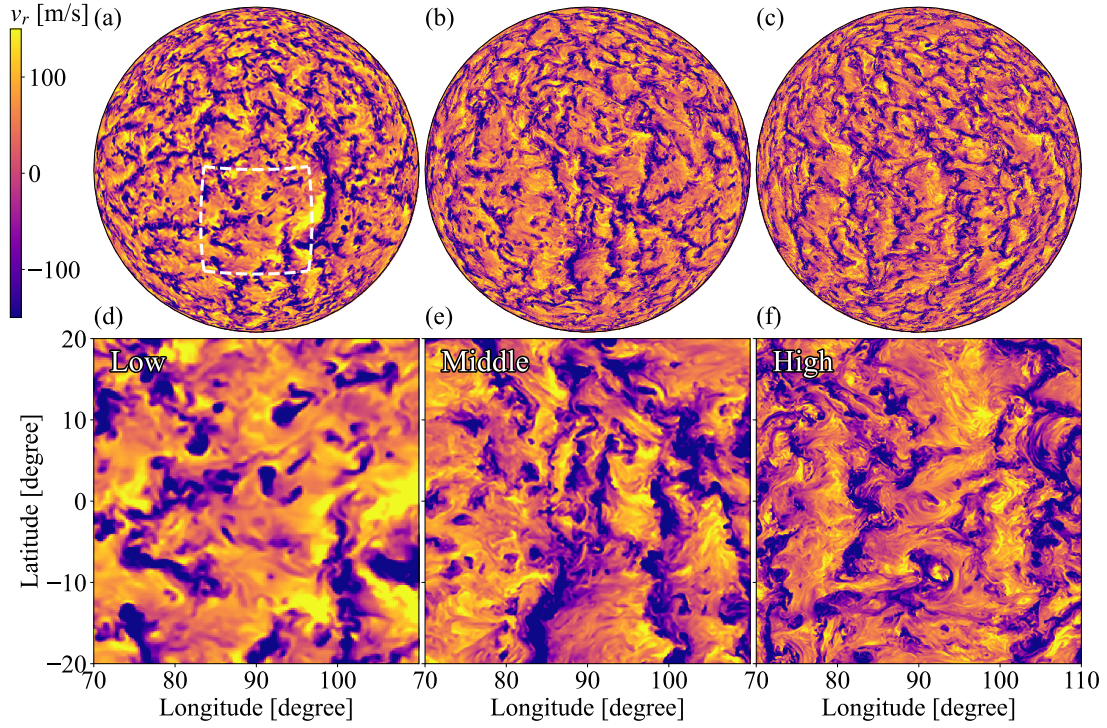


Figure 4. The radial velocity v_r at $r = 0.9R_\odot$ is shown. The format is the same as Fig. 2. Movie is available at <https://youtu.be/Ne0jsSCTXX4>.

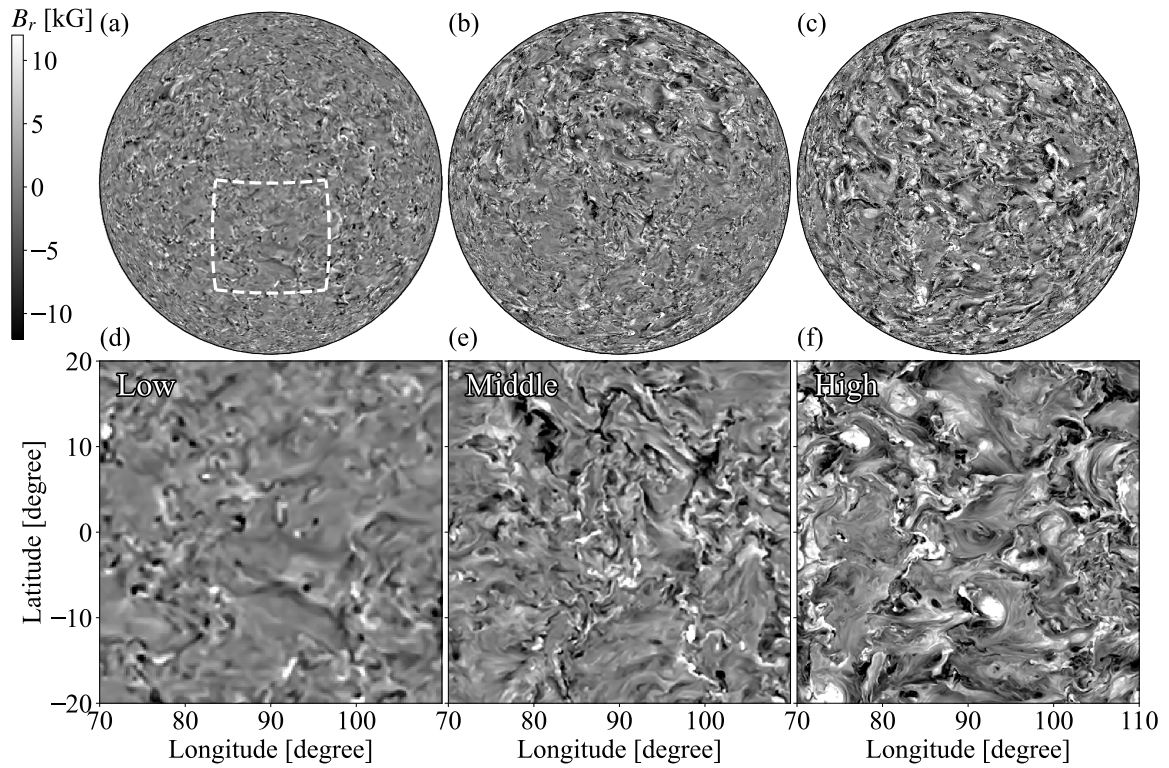


Figure 5. The radial magnetic field B_r at $r = 0.9R_\odot$ is shown. The format is the same as Fig. 2. Movie is available at <https://youtu.be/cYZqLUHNMt4>.

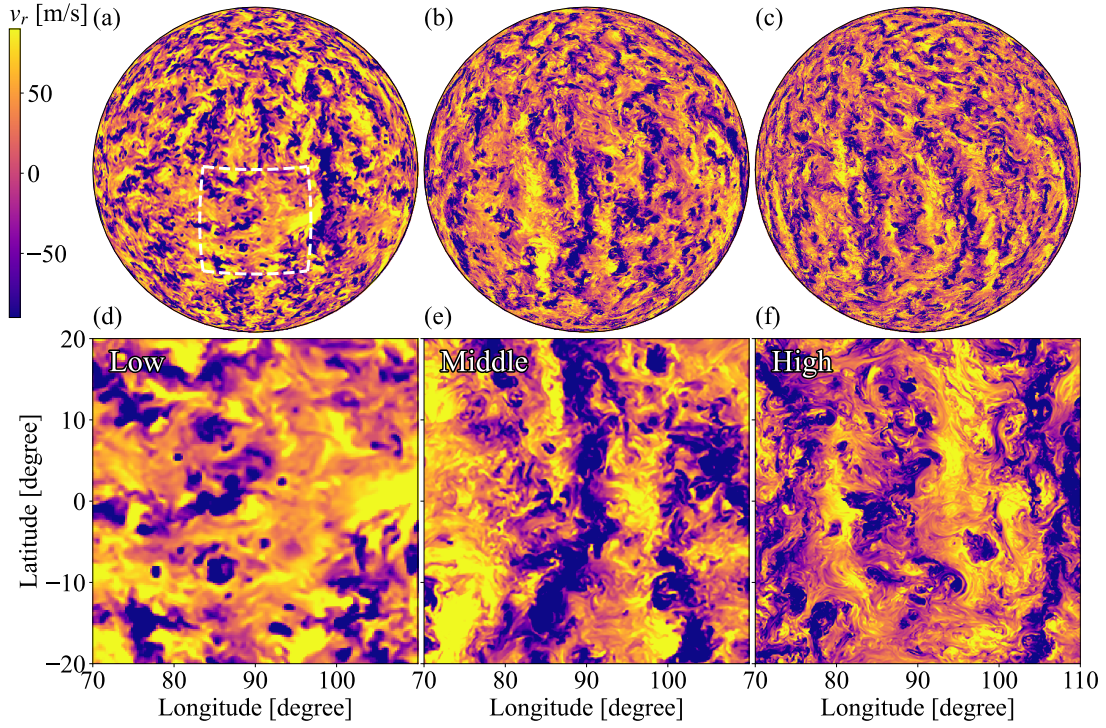


Figure 6. The radial velocity v_r at $r = 0.85R_\odot$ is shown. The format is the same as Fig. 2. Movie is available at <https://youtu.be/8zZW8OP9i7Y>.

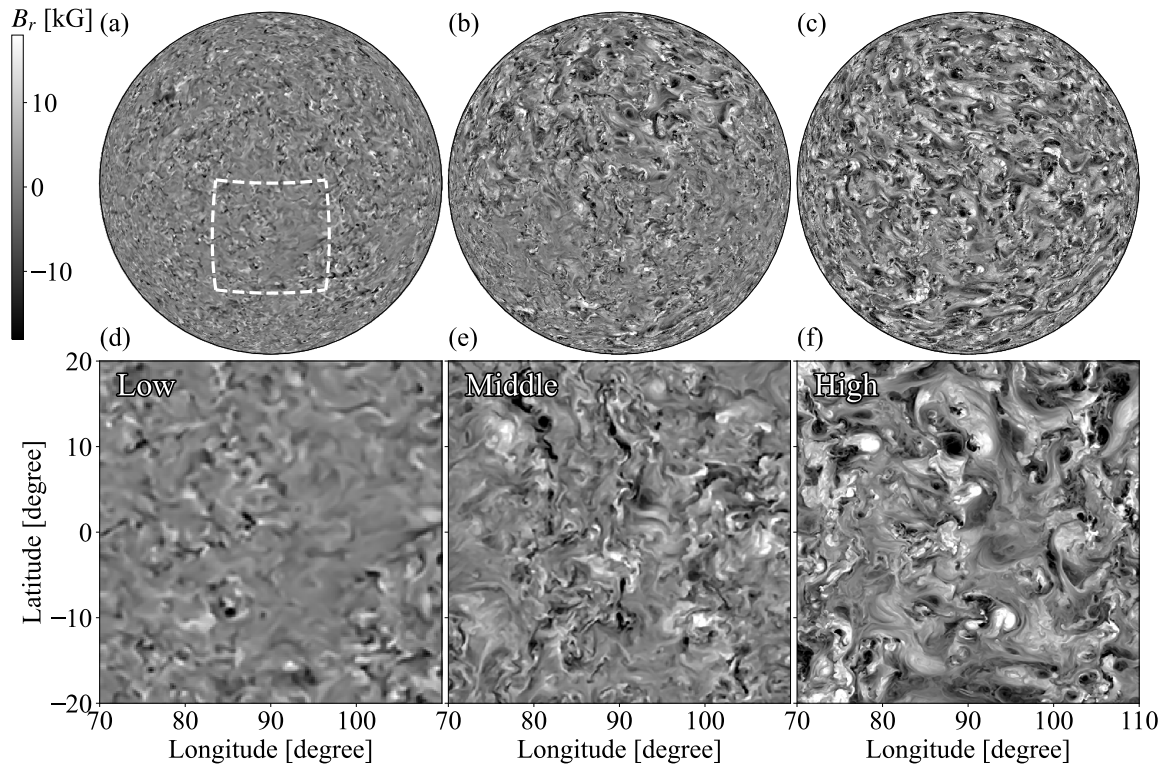


Figure 7. The radial magnetic field B_r at $r = 0.85R_\odot$ is shown. The format is the same as Fig. 2. Movie is available at <https://youtu.be/0C6XFdYDkKk>.

downflow lanes (Fig. 2f). The banana-cell, the north-south aligned convection cell, cannot be seen in all the cases at this depth.

Fig. 3 shows the radial magnetic field B_r at $r = 0.95R_\odot$. The magnetic field strength increases from the Low case to the High case. This tendency is also seen in the other depth (see Figs. 5 and 7). In all the cases, the radial magnetic field is swept up to the downflow region. This concentration is also seen in the previous calculation in the deep interior (Brun et al. 2004) and the photosphere (Vögler et al. 2005). While the previous simulations and the Low case in this study typically show sheet-like magnetic flux aligned to the downflow lane, we can occasionally observe blob-shaped magnetic flux (a notable one is indicated by the dashed orange circle in Fig. 3f). This structure shows significantly superequipartition magnetic field strength and low gas pressure. The convection is suppressed in this region. This structure is important for magnetic field generation (see discussion at Subsection 3.5). At $r = 0.9R_\odot$, the convection shows larger-scale pattern. The small-scale convection around the top boundary is merged to construct the larger-scale while increasing the pressure/density scale height in the deep region (see Stein & Nordlund 1998; Lord et al. 2014). The banana-cell-like feature begins to appear in this depth. In the deeper layer ($r = 0.85R_\odot$, middle of the convection zone), the flow pattern shows the banana-cell-like features more clearly than the upper layers (Fig. 6). In the mixing length theory, the convection velocity v_c scales as $\rho_0 v_c^3 \sim L_\odot/4\pi r^2$ (Biermann 1948), where L_\odot is the solar luminosity. This dependence indicates that the convection velocity decreases in the deeper layers with the larger density ρ_0 . The convection time scale is $\tau \sim H_p/v_c$. These relations mean that the convection time scale increases in the deeper layers by increasing the pressure scale height and decreasing the convection velocity. As a result, the convection tends to obey the rotation influence (Coriolis force) and show the banana-cell in the deep layers. The magnetic field distribution is chaotic at this depth. The strong magnetic field tends to locate at the downflow plume, but the coincidence between the downflow and the strong magnetic field is worse than the upper layers.

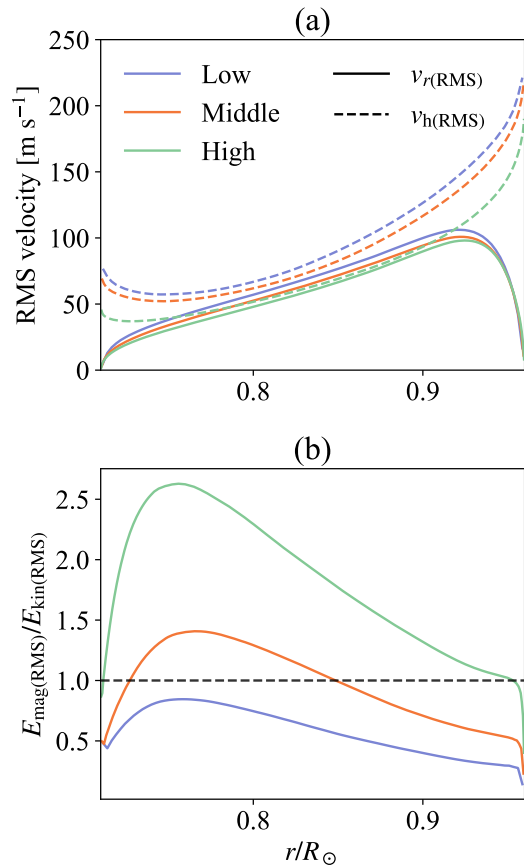


Figure 8. (a) Longitudinal RMS velocity (see eq. (11)) and (b) the ratios of the magnetic energy to the kinetic energy are shown. The blue, orange, and green colors show the results in Low, Middle, High cases. The same color format is used in the following figures unless otherwise noted. The solid and dashed lines in panel a are radial $v_r(\text{RMS})$, and horizontal $v_h(\text{RMS})$ longitudinal RMS velocities, where the horizontal velocity is defined as $v_h = \sqrt{v_\theta^2 + v_\phi^2}$. The black dashed line in panel b indicates the equipartition level, i.e., $E_{\text{mag(RMS)}}/E_{\text{kin(RMS)}} = 1$.

3.2. Statistical properties of convection and magnetic field

In this subsection, we discuss statistical properties of the convection and magnetic fields. Here, we define statistical values of a quantity Q , the longitudinal average $\langle Q \rangle$, the longitudinal RMS (root-mean-square) $Q'_{(\text{RMS})}$, and the latitudinally averaged longitudinal RMS $Q_{(\text{RMS})}$ as follows.

$$\langle Q \rangle(r, \theta) = \frac{1}{2\pi} \int_0^{2\pi} Q d\phi \quad (9)$$

$$Q'_{(\text{RMS})}(r, \theta) = \sqrt{\frac{1}{2\pi} \int_0^{2\pi} (Q - \langle Q \rangle)^2 d\phi} \quad (10)$$

$$Q_{(\text{RMS})}(r) = \sqrt{\frac{1}{2} \int_0^\pi Q'^2_{(\text{RMS})} \sin \theta d\theta} \quad (11)$$

We note that we define spherical average \tilde{Q} and spherical RMS $Q_{(\text{rms})}$ in Subsection 3.6 differently from the current definition.

Fig. 8 shows the longitudinal RMS velocity (panel a) and ratio of the magnetic energy $E_{\text{mag}(\text{RMS})}$ to the kinetic energy $E_{\text{kin}(\text{RMS})}$, where the energies are defined as:

$$E_{\text{kin}(\text{RMS})} = \frac{1}{2} \rho_0 v_{(\text{RMS})}^2 \quad (12)$$

$$E_{\text{mag}(\text{RMS})} = \frac{B_{(\text{RMS})}^2}{8\pi} \quad (13)$$

Fig. 8a shows that the convection velocity is suppressed in the higher resolution. This is a general tendency of the high-resolution simulations (e.g., Hotta et al. 2015b). The horizontal velocity (dashed lines) is more suppressed than the radial velocity (solid lines). A key to understanding convection suppression is the magnetic field. Fig. 8b shows the ratio of the magnetic energy to the kinetic energy. While in the Low case (blue line), the magnetic energy is smaller than the kinetic energy throughout the convection zone, and we observe a superequipartition magnetic field in the High case (green line). The ratio exceeds 2.5 at maximum. This result indicates the strong influence of the magnetic field on the convective flow. The reason why the High case has such a strong magnetic field is discussed in Subsection 3.5, and the suppression mechanism of the convection velocity by the magnetic field is shown in Subsection 3.6.

3.3. Energy spectra

Fig. 9 shows the kinetic and magnetic energy spectra. We show the results at the layers at $r = 0.73R_\odot$ (panel a), $0.85R_\odot$ (panel b), and $0.9R_\odot$ (panel c). See eqs. (6) and (7) of HK21 for the definition of the energy spectra. The tendency of the kinetic energy spectra is almost the same among the different layers.

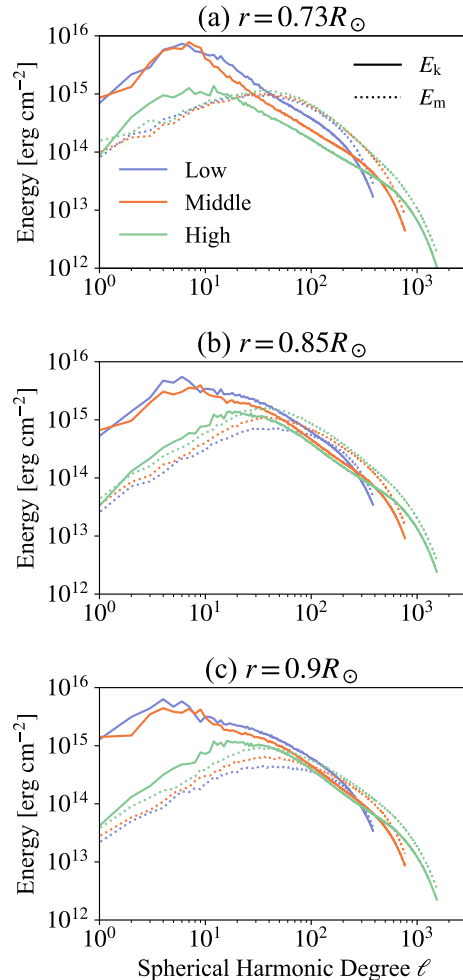


Figure 9. The energy spectra at $r = 0.73R_\odot$ (panel a), $r = 0.85R_\odot$ (panel b), and $r = 0.9R_\odot$ (panel c) are shown. The solid and dotted lines show the kinetic E_k and magnetic E_m energies, respectively.

While the large-scale ($\ell < 10$) energy does not change from the Low to Middle cases (blue and green lines, respectively), the energy is significantly reduced in the High case (green line). This reduction is one of the main topics in this paper. The relation between the kinetic and magnetic energies depends on the resolution. When the magnetic energy surpasses the kinetic energy, we expect an efficient small-scale dynamo. In the Low case, while the magnetic energy exceeds the kinetic energy in the deep layer ($r = 0.73R_\odot$, panel a) in the small scale ($\ell \sim 40$), this clear excess cannot be seen at the shallower layer ($r = 0.9R_\odot$, panel c). The inefficient small-scale dynamo in a shallower

layer is a common feature in the global dynamo calculation (e.g., Hotta et al. 2014). Because the shallower layer has a smaller energy injection scale of the convection because of a small pressure/density scale height and a short time scale for downward magnetic energy transport, we need a high resolution to resolve the small-scale dynamo (see discussion by Stein & Nordlund 2002; Vögler & Schüssler 2007). This difficulty of the small-scale dynamo is solved in the Middle case (orange line). While the turnover scale depends on the layer depth, the excess of the magnetic field in the small scales is achieved in all the layers in the Middle case. The situation drastically changes in the High case (green line). The kinetic energy is reduced in all the scales but especially in the large-scale ($\ell < 30$). This significant suppression is seen at all depths. As a result, the magnetic energy exceeds or is comparable to the kinetic energy in all scales.

3.4. Mean flows

Fig. 10 shows the differential rotation $\langle \Omega \rangle / 2\pi$ and the meridional flow $\langle \mathbf{v}_m \rangle = \langle v_r \rangle \mathbf{e}_r + \langle v_\theta \rangle \mathbf{e}_\theta$. The angular velocity is defined as $\Omega = \Omega_0 + \Omega_1$ and $\Omega_1 = v_\phi / (r \sin \theta)$. While the Low case shows the fast pole (panel a), we reproduce the fast equator in the High case as shown in HK21. The reason why we have the fast equator in the high-resolution calculation is discussed in Subsection 3.8. Also, the differential rotation succeeds in avoiding the Taylor–Proudman constraint, i.e., $\partial \Omega / \partial z \neq 0$, where z is the direction of the rotational axis. This topic is discussed in Subsection 3.7. The meridional flow structure also depends on the resolution (Figs. 10d, e, f). In the Low case, an anti-clockwise flow is dominant, and we can see a clear poleward flow around the surface. We can observe a tiny clockwise cell around the base of the convection zone. In the Middle case, the meridional flow is separated around the tangential cylinder of the base of the convection zone. Anti-clockwise and clockwise flow cells are seen in low and high latitudes, respectively. In the High case, a clockwise meridional flow is dominant throughout the convection zone. The poleward flow around the base of the convection zone is an essential feature for the fast equator (see Subsection 3.8). The poleward meridional flow around the surface becomes weak in Middle and High cases. Note

that we can recover clear poleward meridional flow when the top boundary is closer to the real solar surface (Hotta et al. 2015a). In a high-resolution calculation, we have already checked this tendency and will introduce it in a future publication (Hotta, Kusano & Sekii, in prep).

3.5. Magnetic field generation

In this subsection, we discuss the generation mechanism of the magnetic field, especially the superequipartition magnetic field achieved in the High case (Fig. 8). We analyze the magnetic energy equation to investigate the mechanism. The equation is as follows.

$$\frac{\partial}{\partial t} \left(\frac{B^2}{8\pi} \right) = \underbrace{-\frac{\mathbf{B}}{4\pi} \cdot [(\mathbf{v} \cdot \nabla) \mathbf{B}]}_{T_{m(\text{ADV})}} + \underbrace{\frac{\mathbf{B}}{4\pi} \cdot [(\mathbf{B} \cdot \nabla) \mathbf{v}]}_{T_{m(\text{STR})}} - \underbrace{\frac{B^2}{8\pi} (\nabla \cdot \mathbf{v})}_{T_{m(\text{CMP})}} \quad (14)$$

There are three contributions to change the magnetic energy, which are advection $T_{m(\text{ADV})}$, stretching $T_{m(\text{STR})}$, and compression $T_{m(\text{CMP})}$. Fig. 11a shows the spherically averaged terms in eq. (14). The solid lines indicate the contribution from the advection $T_{m(\text{ADV})}$. Around the top boundary, the strong magnetic field is concentrated in the downflow region, and the magnetic energy is transported downward. As a result, the advection contribution is negative and positive in the near-surface layer and the deep convection zone, respectively. Because the higher resolution shows a stronger magnetic field, this effect increases with increased resolution. Next, the dashed lines are the contribution by the stretching term $T_{m(\text{STR})}$. In most of the convection zone, the amplitude decreases in the higher resolutions. Because the magnetic field increases, the Lorentz feedback is amplified, and the production rate of the magnetic field decreases. Fig. 11b shows the PDF between the radial velocity v_r and the stretching term $T_{m(\text{STR})}$. The result indicates that the main contribution of the stretching occurs at the downflows ($v_r < 0$). While the net contribution of the stretching is positive, we can see a significant negative contribution (energy transfer from magnetic to ki-

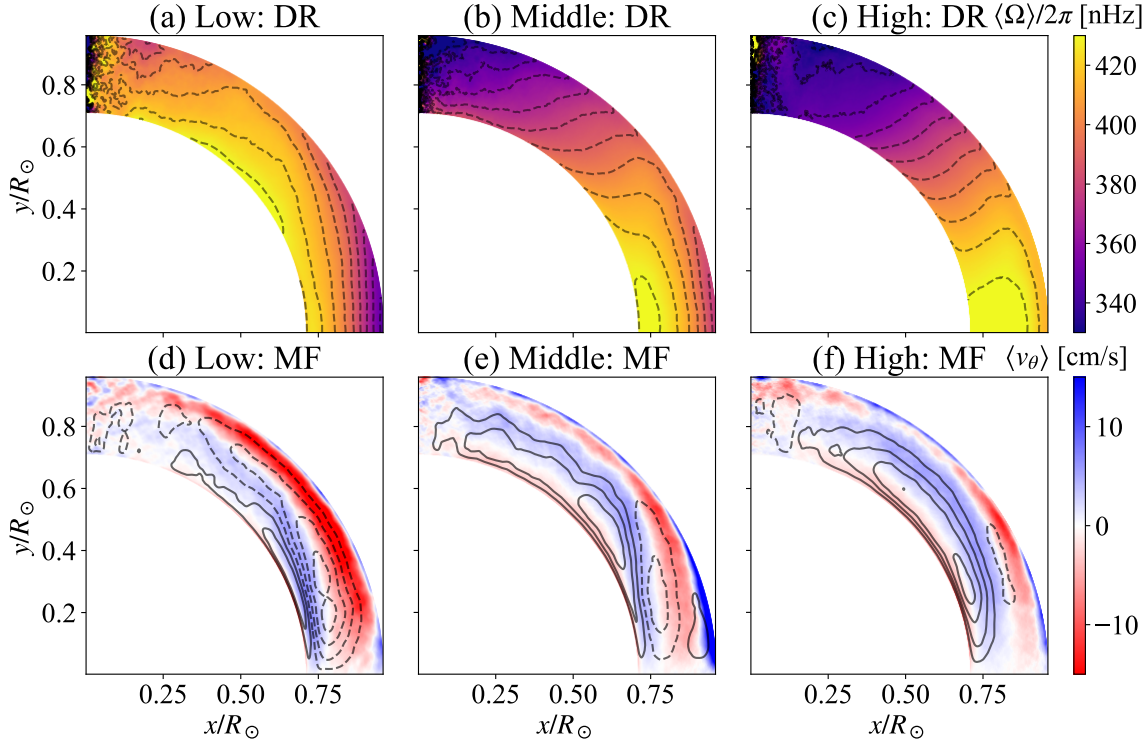


Figure 10. Differential rotation $\langle \Omega \rangle / 2\pi$ (panels a, b, c) and meridional flow $\langle v_\theta \rangle$ (panels d, e, and f) in Low (panels a, d), Middle (panels b, e), and High (panels c, f) are shown. The black lines in the lower panels are stream lines of the mass flux $\rho_0 \mathbf{v}_m$, see Appendix A). The solid and dashed lines indicate the clockwise and the counter clockwise flows, respectively.

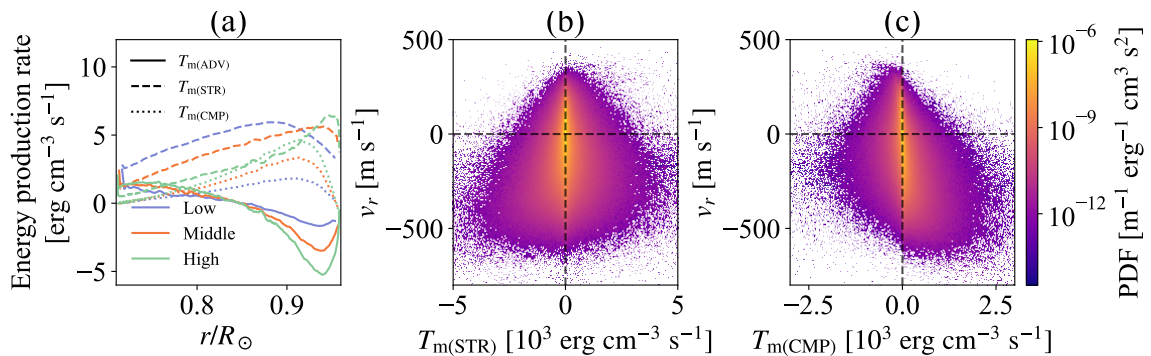


Figure 11. Magnetic field generation process is discussed. (a) Horizontally (spherically) averaged magnetic energy production rate is shown. The solid, dashed, and dotted lines indicate the magnetic energy production by the advection $T_{m(ADV)}$, stretching $T_{m(STR)}$, and compression $T_{m(CMP)}$, respectively. The definition of each term is shown in eq. (14). Panels b and c show PDFs for v_r vs. $T_{m(STR)}$ and v_r and $T_{m(CMP)}$ at $r = 0.9R_\odot$, respectively. The results for panels b and c are obtained from the High case.

netic energies) in the downflow region. The tendency of the stretching on the resolution indicates that the stretching is not responsible for the superequipartition magnetic fields in the High case. Finally, we discuss the compression term $T_{m(CMP)}$ shown with the dotted lines in Fig. 11a. The amplitude of the compression term monotonically increases with increased

resolution. Also, Fig. 11c shows the PDF between the radial velocity v_r and the compression term $T_{m(CMP)}$. Similar to the stretching, the important compression occurs at the downflow region, but the negative contribution of $T_{m(CMP)}$ is not significant. The reason why the fluid can overcome and compress the strong magnetic field to amplify the field strength is

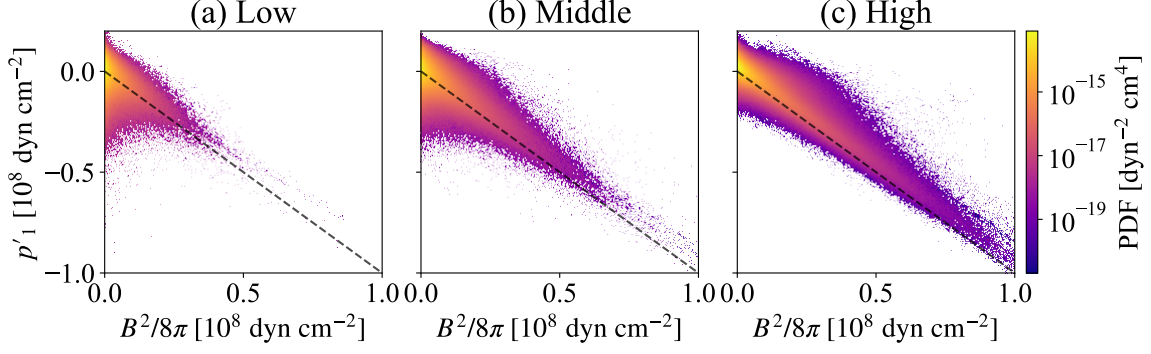


Figure 12. Probability density functions (PDFs) for p'_1 vs. $B^2/8\pi$ at $r = 0.9R_\odot$ are shown. Panels a, b, and c are results from the Low, Middle, and High cases, respectively. The black dashed lines indicate $p'_1 = -B^2/8\pi$.

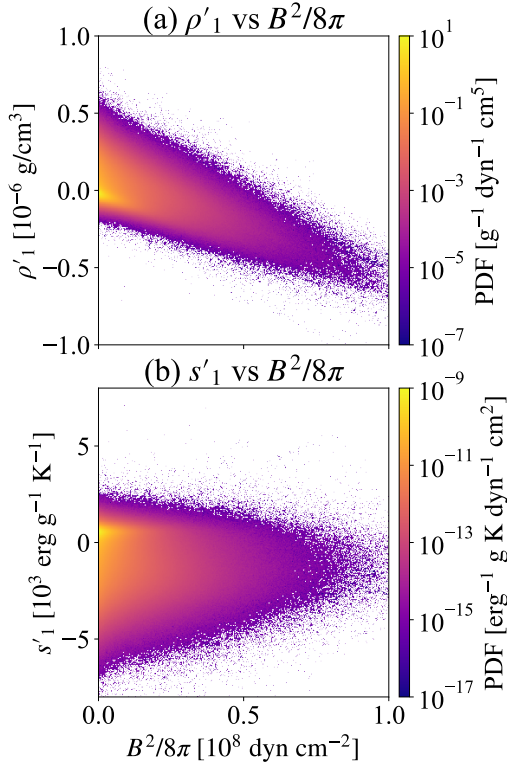


Figure 13. PDFs for p'_1 vs. $B^2/8\pi$ (panel a) and s'_1 vs. $B^2/8\pi$ (panel b) at $r = 0.9R_\odot$ from the High case, respectively.

shown in Fig. 12. PDFs between the magnetic pressure (energy) and perturbation gas pressure are shown. The perturbation gas pressure is defined as

$$p'_1 = p_1 - \langle p_1 \rangle, \quad (15)$$

and is the deviation from the longitudinal average. The black dashed line in Fig. 12 indicates $p'_1 = -B^2/8\pi$, i.e., the magnetic pressure is balanced with the gas pressure. In

the Low case (Fig. 12a), the PDF distributes rather uniformly. Even the small magnetic energy ($\sim 10^8 \text{ dyn cm}^{-2}$) has large perturbation gas pressure ($< -4 \times 10^7 \text{ dyn cm}^{-2}$). In the High case (Fig. 12), the magnetic field strength is amplified, and most of the strong magnetic field distributes on the $p'_1 = -B^2/8\pi$ line. Also, the region with a weak magnetic field and the low gas pressure disappears. These results indicate that the gas pressure maintains the superequipartition magnetic field realized in the High case. Because the solar interior is in a low Mach number situation, the internal energy is huge compared with the kinetic and magnetic energies. The region with the weak magnetic field and the low gas pressure disappears in the High case, indicating that the dynamo is efficient enough to amplify all the small-scale fields once the magnetic field enters the low gas pressure region.

This process where the internal energy amplifies the magnetic field is similar to the explosion process (Moreno-Inertis et al. 1995; Rempel & Schüssler 2001; Hotta et al. 2012a). In the explosion process, the rising motion in the superadiabatic stratification leads to an entropy difference between the inside and outside of the flux tube. Fig. 13 shows the PDFs between (a) perturbation density and magnetic pressure and (b) perturbation entropy and the magnetic pressure. While the density well correlates with the magnetic pressure, the entropy does not. This result indicates that the entropy does not contribute to the amplification and that the process achieved in this study is different from the explosion process.

Also, as shown in Hotta et al. (2015b), the absolute amplitude of entropy perturbation in-

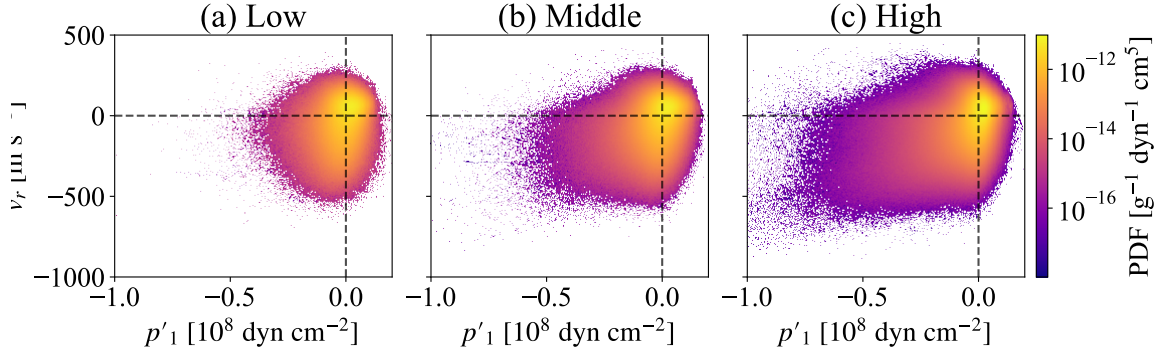


Figure 14. PDFs for v_r vs. p'_1 at $r = 0.9R_\odot$. Panels a, b, and c show the results from the Low, Middle, and High cases.

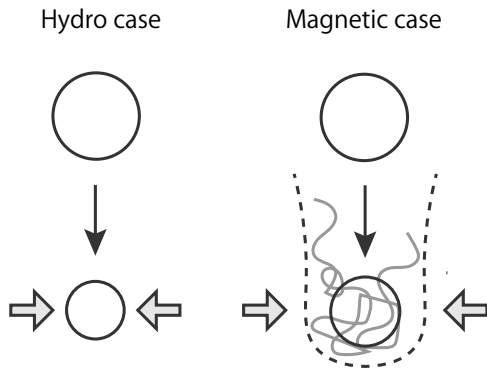


Figure 15. Explanation of compression mechanism to generate the strong magnetic field in thermal convection. The left panel shows the process in a hydrodynamic case without the magnetic field. The right panel shows a case with the magnetic field. The circle indicates the fluid parcel. The gray line in the right panel is a magnetic field line. The gray arrow indicates the gas pressure from an external fluid.

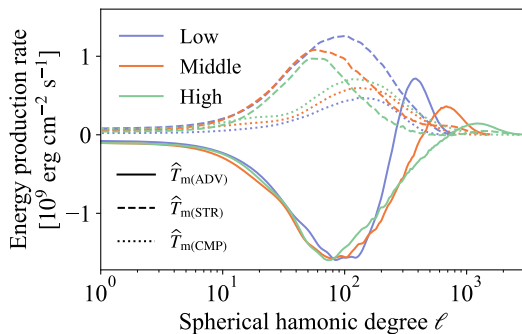


Figure 16. Spectra of the magnetic energy production rate at $r = 0.9R_\odot$ are shown.

increases with increased resolution. This increase also occurs in this study (see Subsection 3.6), and this tends to lower the gas pressure in the downflow region ($s_1 < 0$) because the linearized equation of state is expressed as

$$\frac{p_1}{p_0} = \gamma \frac{\rho_1}{\rho_0} + \frac{s_1}{c_v}. \quad (16)$$

Again, Fig. 13b shows that the correlation between the entropy perturbation and the magnetic pressure is not good, and this fact indicates that the increase of the entropy perturbation does not contribute to amplifying the magnetic field.

We also investigate the location of the strong magnetic field amplification. Fig. 14 shows the PDF between the gas pressure perturbation p'_1 and the radial velocity v_r . When we compare the Low (panel a) and High (panel c) cases, the low gas pressure region appears, especially at the downflow region. Considering the result shown, we can draw an overall picture of the amplification process of the superequipartition magnetic field. A schematic picture is shown in Fig. 15. In a hydrodynamic case without the magnetic field (left panel), when a fluid parcel in the upper layer descends, the parcel has low pressure compared with the external fluid in the lower layer because of the stratification. This pressure imbalance is instantaneously relaxed by the sound wave. In a magnetic case, especially with an efficient small-scale dynamo like the High case, the situation changes. When a fluid parcel goes down to the lower layer, the small-scale magnetic field is involved. The low gas pressure compared with the external is maintained by the external gas pressure and the magnetic pressure. Thus, the magnetic energy is amplified by the compression, i.e., maintained by the internal energy.

We also discuss the spatial scale of magnetic field amplification. The spectral magnetic energy is expressed by

$$\widehat{E}_{\text{mag}}(\ell) = \frac{1}{8\pi} \widehat{\mathbf{B}}(\ell) \cdot \widehat{\mathbf{B}}^*(\ell), \quad (17)$$

where $\widehat{}$ and * denote the spherical harmonic transform and the complex conjugate, respectively. Then, the time evolution of $\widehat{E}_{\text{mag}}(\ell)$ can be written as (see details in Pietarila Graham et al. 2010; Rempel 2014),

$$\frac{\partial}{\partial t} \widehat{E}_{\text{mag}}(\ell) = \widehat{T}_{\text{m(STR)}} + \widehat{T}_{\text{m(ADV)}} + \widehat{T}_{\text{m(CMP)}}, \quad (18)$$

where

$$\widehat{T}_{\text{m(STR)}} = \frac{1}{8\pi} \widehat{\mathbf{B}} \cdot (\widehat{\mathbf{B}} \cdot \nabla) \mathbf{v}^* + c.c., \quad (19)$$

$$\widehat{T}_{\text{m(ADV)}} = -\frac{1}{8\pi} \widehat{\mathbf{B}} \cdot (\mathbf{v} \cdot \nabla) \widehat{\mathbf{B}}^* + c.c., \quad (20)$$

$$\widehat{T}_{\text{m(CMP)}} = -\frac{1}{8\pi} \widehat{\mathbf{B}} \cdot (\widehat{\mathbf{B}} \nabla \cdot \mathbf{v})^* + c.c., \quad (21)$$

where *c.c.* indicates the complex conjugate expression. Each term in the spectral magnetic energy evolution at $r = 0.9R_{\odot}$ is shown in Fig. 16. The magnetic energy transfer by the advection $\widehat{T}_{\text{m(ADV)}}$ does not depend on the resolution in a middle ($\ell \sim 10^2$) to large scale ($\ell \sim 1$). The advection term contribution $\widehat{T}_{\text{m(ADV)}}$ is typically negative because the downward magnetic energy transport is dominant at this height. Around the smallest scale in each resolution, $\widehat{T}_{\text{m(ADV)}}$ is positive. The dominant magnetic energy production source is the stretching $\widehat{T}_{\text{m(STR)}}$, but the production rate decreases with increased resolution, especially at the small-scale because the magnetic field strength and the resulting Lorentz feedback increase. Meanwhile, the compression contribution $\widehat{T}_{\text{m(CMP)}}$ increases with the resolution at middle scale ($\ell \sim 100$). The peak scale of the compression does not depend on the resolution. This result also supports our presented explanation of the amplification mechanism of the strong magnetic field. A complex small-scale magnetic field is concentrated at the downflow region. The field is strong enough to suppress the turbulent stretching, but the compression can still work.

3.6. Convection driving

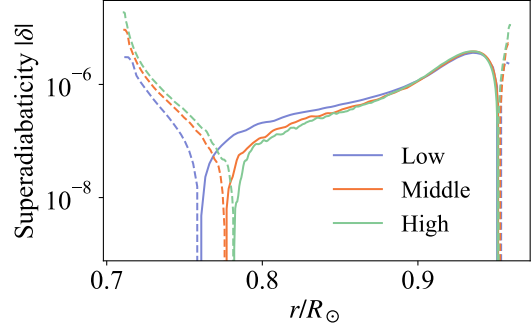


Figure 17. Superadiabaticity $|\delta|$ is shown. The solid and dashed lines indicate the positive and negative values of δ , respectively.

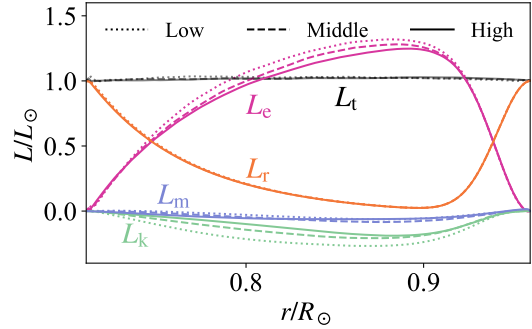


Figure 18. The enthalpy (magenta), radiative (orange), kinetic (green), and Poynting (blue) fluxes are shown. The solid, dashed, and dotted lines are the results from High, Middle, and Low cases, respectively.

In this subsection, we discuss the driving mechanism of the thermal convection. In particular, the mechanism in which the large-scale convection is suppressed in the High case is discussed.

For the discussion in this subsection, we additionally define statistical values, spherical average \bar{Q} , spherical RMS $Q_{(\text{rms})}$, spherical correlation $[Q_1 Q_2]$, and normalized spherical cor-

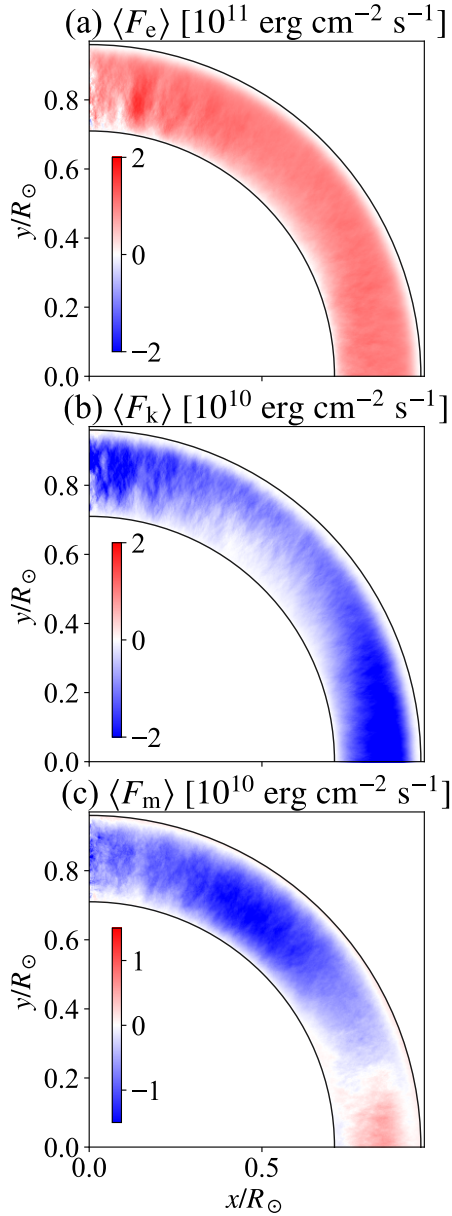


Figure 19. Longitudinally averaged energy flux in the High case is shown. Panels a, b, and c show the enthalpy, kinetic, and Poynting fluxes, respectively.

relation $\overline{Q_1 Q_1}$ as follows.

$$\tilde{Q}(r) = \frac{1}{4\pi} \int_S Q dS \quad (22)$$

$$Q_{(\text{rms})}(r) = \sqrt{\frac{1}{4\pi} \int_S (Q - \tilde{Q})^2 dS} \quad (23)$$

$$[Q_1 Q_2](r) = \frac{1}{4\pi} \int_S Q_1 Q_2 dS \quad (24)$$

$$\overline{Q_1 Q_2}(r) = \frac{[Q_1 Q_2]}{Q_{1(\text{rms})} Q_{2(\text{rms})}} \quad (25)$$

We note that the spherical RMS $Q_{(\text{rms})}$ defined in eq. (23) is different from the longitudinal RMS $Q_{(\text{RMS})}$ defined in eq. (11). Fig. 17 shows the superadiabaticity δ in different cases. The superadiabaticity is defined such as:

$$\delta = -\frac{H_p}{c_p} \frac{d\tilde{s}}{dr}. \quad (26)$$

We observe a thermal convectively stable region ($\delta < 0$) in all cases. This layer is common in an effectively high Prandtl number convection (Hotta 2017; Bekki et al. 2017; Käpylä 2019). The effective high Prandtl number is achieved with the strong small-scale magnetic field. In a high Prandtl number regime, the thermal structure does not diffuse, and low entropy material is accumulated at the base of the convection zone. This process results in the convectively stable region ($\delta < 0$). Bekki et al. (2017) shows that when the stable region is achieved around the base of the convection zone, the large-scale flow is suppressed because the convection driving scale in the deeper layer is larger because of the large pressure/density scale height. Because the stable region expands and the absolute value of superadiabaticity $|\delta|$ increases with the resolution, this effect should contribute to suppressing the large-scale convection. The difference of the superadiabaticity, however, between the Low and Middle cases is larger than that between the Middle and High cases, while the large-scale flow is significantly suppressed only in the High case. This indicates that the main reason for the large-scale suppression is not the change of the superadiabaticity.

The basic value that determines the convection velocity is the energy flux. In the solar convection zone, the energy flux is fixed by the efficiency of the nuclear fusion. Fig. 18 shows different types of fluxes. Definitions of the enthalpy F_e , kinetic F_k , Poynting F_m , radiative

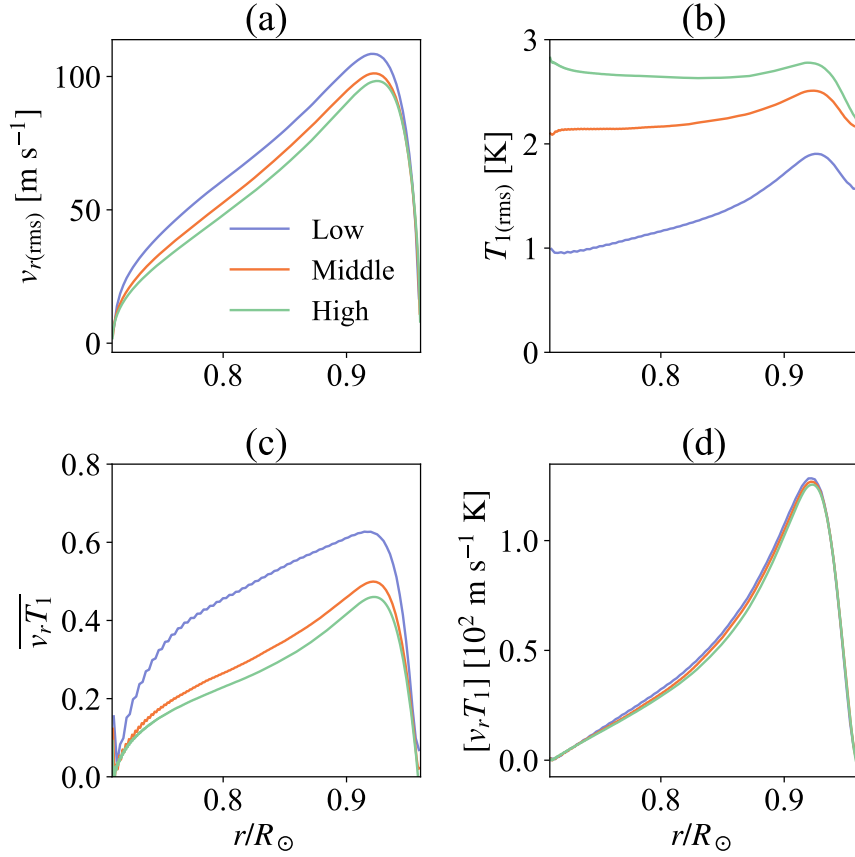


Figure 20. Each panel shows (a) RMS radial velocity, (b) RMS temperature perturbation, (c) correlation between v_r and T_1 (see eq. (24)), and (d) normalized correlation between v_r and T_1 (see eq. (25)).

F_r , and total F_t flux densities are (see Hotta et al. 2014)

$$F_e = \left(e_1 + \frac{p_1}{\rho_0} - \frac{p_0}{\rho_0^2} \rho_1 \right) \rho v_r, \quad (27)$$

$$F_k = \frac{1}{2} \rho v^2 v_r, \quad (28)$$

$$F_m = \frac{1}{4\pi} [(B_\theta^2 + B_\phi^2) v_r - (v_\theta B_\theta + v_\phi B_\phi) B_r], \quad (29)$$

$$F_r = F_{\text{rad}} + F_{\text{art}}, \quad (30)$$

$$F_t = F_e + F_k + F_m + F_r, \quad (31)$$

where e is the internal energy. F_{rad} and F_{art} are defined at eqs. (7) and (8), respectively. For convenience, the sum of the physics-based radiation flux density F_{rad} and an artificial energy flux density F_{art} is called the radiative flux density F_r in this study.

In Fig. 18, we integrate the flux densities over the full sphere and evaluate each corresponding luminosity (flux). The enthalpy flux L_e (magenta) slightly decreases with increased reso-

lution. The decrease is more moderate than expected from the convection velocity suppression (Fig. 8). In the mixing length theory, the enthalpy flux scales as $L_e \propto v_c^3$, and the suppression of the convection velocity v_c should have a strong influence on the enthalpy flux. This deviation from the mixing length theory is essential to investigate the suppression mechanism of the convection velocity. The slight decrease of the enthalpy flux can be compensated for by the kinetic flux. As is usual, the kinetic flux is negative because the downflow has larger kinetic energy. This is reduced because of the convection velocity suppression. The Poynting flux has minor contributions, but the flux has a negative value. This downward Poynting flux is also caused because the downflow region has larger magnetic energy. Fig. 19 shows two-dimensional energy flux density distribution in the High case. The enthalpy flux density does not show a significant dependence on the latitude. The kinetic energy flux density

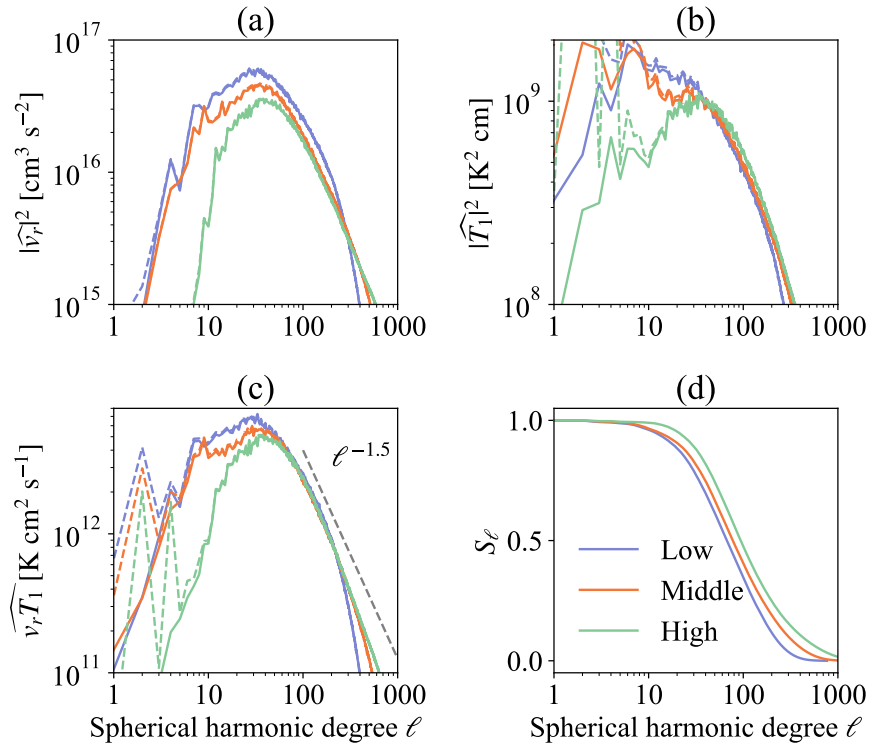


Figure 21. Panels show the spectra of (a) radial velocity, (b) temperature perturbation, (c) correlation between radial velocity v_r and temperature T_1 . Panel d shows normalized summed correlation S_ℓ defined at eq. (33). All the data are calculated at $r = 0.9R_\odot$. The dashed lines indicate spectra including $m = 0$ mode.

shows a larger absolute value at the equator and pole. The Poynting flux density is negative in most convection zones, while it shows a positive value around the equator.

In this paragraph, we discuss why the energy flux (especially the enthalpy flux) is maintained even with the suppressed convection velocity. With the equation of state for the perfect gas, the enthalpy flux density can be expressed as

$$F_e \sim \rho_0 c_p [v_r T_1]. \quad (32)$$

Because the background density, ρ_0 , and heat capacity at constant pressure, c_p , do not change in a low Mach number situation, the correlation between the radial velocity, v_r , and the temperature perturbation, T_1 , determines the enthalpy flux. Fig. 20 shows analysis to this end. Fig. 20a shows the spherical RMS for the radial velocity $v_{r(\text{rms})}$. As discussed, the convection velocity is suppressed. Fig. 20b shows the spherical RMS for the temperature perturbation $T_{1(\text{rms})}$. $T_{1(\text{rms})}$ increases with increased resolution. The magnetic field is amplified in higher-resolution simulations that sup-

press the mixing between the up and downflow. This process increases the temperature perturbation (see also Hotta et al. 2015b). In addition, the latitudinal temperature difference increases because of the presented process (see Subsection 3.7). The increased latitudinal temperature difference also contributes to increasing the spherical RMS for the temperature $T_{1(\text{rms})}$. Fig. 20c shows the normalized spherical correlation between the radial velocity v_r and the temperature perturbation T_1 . The correlation decreases with the increase in the resolution. This correlation should be good when the flow obeys the thermal convection. In the high-resolution simulations, small-scale turbulence, which does not behave as the thermal convection, increases, and the correlation decreases. As a result, the dimensional correlation $[v_r T_1]$, which directly determines the energy flux, stays the same among different resolutions (Fig. 20). As a summary, the suppressed convection velocity and the worse normalized correlation are compensated by the in-

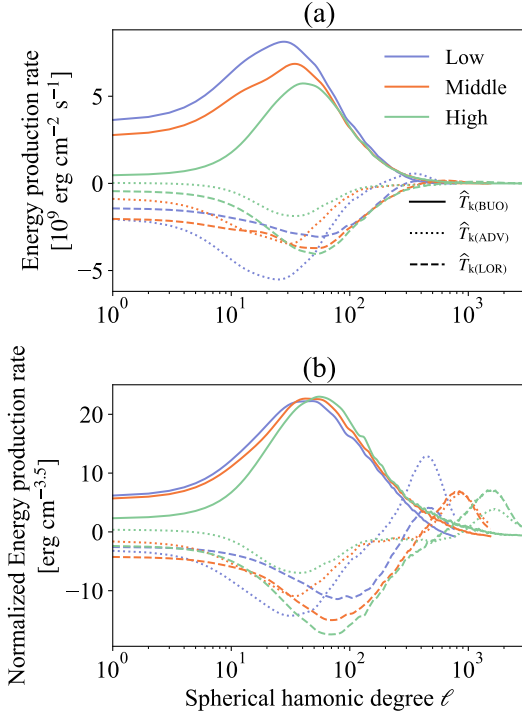


Figure 22. Spectra of the kinetic energy production rate at $r = 0.9R_{\odot}$ are shown. Panel b shows the values shown in panel a normalized with $\sqrt{\widehat{v}_r \widehat{v}_r^*}$

crease in temperature perturbation to maintain the energy flux.

We also discuss the energy flux from the viewpoint of the spatial scale. Figs. 21a, b, and c show the spectra of the radial velocity, the temperature perturbation, and these correlations, respectively. As discussed already, the radial velocity is suppressed in all the scales (Fig. 21a). The increase of the temperature perturbation in the High case is mainly seen in the small scales ($\ell > 40$; Fig. 21b). These results support our interpretation of the increase of the temperature perturbation in the High case. We expect the suppression of the mixing by the magnetic field to increase the temperature perturbation effectively. This process is most effective on a small scale. The combination of the decrease of the radial velocity and the increase of the temperature perturbation in the small scales leads to a situation where the correlation $\widehat{v}_r \widehat{T}_1$ in the small scale ($\ell > 40$) stays the same (Fig. 21c). In addition, the higher-resolution calculation has a long tail of the correlation on a smaller scale. This result

indicates that a significant fraction of the energy is transported by the small-scale turbulence in the High case. To evaluate the importance of the small-scale in energy transport, we calculate a value S_{ℓ} defined as follows.

$$S_{\ell} = \frac{\sum_{\ell'=\ell}^{\ell_{\max}} \widehat{v}_r \widehat{T}_1(\ell')}{\sum_{\ell'=0}^{\ell_{\max}} \widehat{v}_r \widehat{T}_1(\ell')} \quad (33)$$

S_{ℓ} shows the fraction of the correlation from ℓ to ℓ_{\max} to the total correlation. Fig. 21d shows the dependence of S_{ℓ} on the resolution. S_{ℓ} reaches unity around $\ell \sim 5$ in the Low and Middle cases, while $\ell \sim 20$ is enough for S_{ℓ} to reach unity in the High case. This indicates that in the High case, a significant fraction of the energy is transported by the middle to small scales ($\ell > 20$), and the large-scale cannot transport the energy. We conclude that this is the main reason why the large-scale convection is suppressed in the High case.

We also investigate the convection driving mechanism in the viewpoint of the scale. In the analyses, we assume the background density is constant in time. Similar to the spectral magnetic energy \widehat{E}_{mag} discussed in Subsection 3.5, the spectral kinetic energy \widehat{E}_{kin} evolution equation can be written such as:

$$\frac{\partial}{\partial t} \widehat{E}_{\text{kin}} = \widehat{T}_{k(\text{ADV})} + \widehat{T}_{k(\text{BUO})} + \widehat{T}_{k(\text{LOR})}, \quad (34)$$

where

$$\widehat{T}_{k(\text{ADV})} = -\frac{1}{2} \rho_0 \widehat{\mathbf{v}} \cdot \widehat{\mathbf{v}} \cdot \nabla \mathbf{v}^* + c.c., \quad (35)$$

$$\widehat{T}_{k(\text{BUO})} = -\frac{1}{2} \rho_0 \widehat{\mathbf{v}} \cdot -\rho_1 \widehat{\mathbf{g}} + \nabla p^* + c.c., \quad (36)$$

$$\widehat{T}_{k(\text{LOR})} = \frac{1}{8\pi} \widehat{\mathbf{v}} \cdot (\nabla \times \widehat{\mathbf{B}}) \times \mathbf{B}^* + c.c.. \quad (37)$$

The result at $r = 0.9R_{\odot}$ is shown in Fig. 22. We note that while the Coriolis force should affect the spectral analysis, the amplitude is 1–2 orders of magnitude smaller than the other values, and we do not include it in our discussion. The general tendency is that the buoyancy drives the thermal convection and the advection, and the Lorentz force reduces the kinetic energy in almost all the scales. Also, both the energy production and the suppression on the large-scale is small in the High case.

For all the contributions to the kinetic energy transfer, the velocity is multiplied. In the High case, the kinetic energy in the large-scale is reduced, and the reduction of the energy transfer seems an obvious result. To investigate the effective importance of the large-scale suppression, we normalize the kinetic energy transfer by $\sqrt{\widehat{v}\widehat{v}^*}$ (Fig. 22b). The normalized kinetic energy transfer by the buoyancy $\widehat{T}_{k(\text{BUO})}$ is reduced only in the High case. We also observe the suppression of the Lorentz force contribution. These results indicate that the suppression of the large-scale kinetic energy is caused by the suppression of the buoyancy via change of stratification (Fig. 17) and scale shift of the energy flux (Fig. 21). The magnetic field on a large scale does not directly contribute to the large-scale suppression.

3.7. Meridional force balance

In this subsection, we discuss the force balance on the meridional plane, especially about the Taylor–Proudman constraint. The differential rotation in the High case does not obey the Taylor–Proudman constraints, i.e., $\partial\Omega/\partial z \neq 0$, where z indicates the direction of the rotational axis. To address this aspect, we need to analyze the vorticity equation (e.g., Miesch & Hindman 2011). The longitudinal component of the vorticity equation in a steady-state $\partial/\partial t = 0$ is written as

$$\underbrace{-2r \sin \theta \Omega_0 \frac{\partial \langle \Omega_1 \rangle}{\partial z}}_{P_{\text{COR}}} = \underbrace{\langle \nabla \times (\mathbf{v} \times \boldsymbol{\omega}) \rangle_\phi}_{P_{\text{ADV}}} + \underbrace{\frac{g}{\rho_0 r} \left(\frac{\partial \rho}{\partial s} \right)_p \frac{\partial \langle s_1 \rangle}{\partial \theta}}_{P_{\text{BAR}}} + \underbrace{\left\langle \nabla \times \left[\frac{1}{4\pi \rho_0} (\nabla \times \mathbf{B}) \times \mathbf{B} \right] \right\rangle_\phi}_{P_{\text{MAG}}} \quad (38)$$

We show each term in the equation in Fig. 23. To suppress realization noise, especially in P_{ADV} and P_{MAG} , we use a Gaussian filter with a width of 5×5 grid points. We also show the spherically averaged 1D profile of each term in Fig. 24. We use a Gaussian filter with a width of five grid points also for the 1D profile. The raw data are shown with transparent lines. The results clearly show that the

deviation from the Taylor–Proudman theorem (P_{COR}) is mainly balanced by the baroclinic term (P_{BAR}). We see a significant deviation from the Taylor–Proudman theorem around the top boundary. This is maintained both by the advection (P_{ADV}) and the magnetic field (P_{MAG}). While this tendency is important to discuss the near-surface shear layer, we leave this for our future publication for the near-surface layer (Hotta, Kusano, & Sekii in prep). In this paper, we focus on the discussion about the Taylor–Proudman theorem in the middle of the convection zone. The result shows that the Coriolis force is balanced with the baroclinic term, i.e., the latitudinal entropy gradient. Hotta (2018) argues that the efficient small-scale dynamo and generated magnetic field help construct the entropy gradient. As shown in Subsection 3.6, the temperature perturbation increases with increased resolution. In addition, the convection velocity is reduced in the higher resolutions (Fig. 8). The Coriolis force bends a warm upflow (cold downflow) poleward (equatorward). Both the high-resolution effects (increasing the temperature perturbation and reducing the convection velocity) enhance this process. Fig. 25 shows the entropy and the temperature distributions in the High case. We succeed in reproducing the negative entropy and temperature gradient in the whole convection zone. Miesch et al. (2006) enforce the entropy gradient at the bottom boundary to avoid the Taylor–Proudman constraint (see also Miesch et al. 2008; Fan & Fang 2014). Also, Brun et al. (2011) maintains the entropy gradient by a dynamical coupling of the convection and radiation zones (see also Rempel 2005). In their studies, maintaining the negative entropy gradient in the near-surface equator is difficult, and the differential rotation tends to be the Taylor–Proudman type topology in the near-surface equator region (For example, see Figs. 10 and 13 of Brun et al. 2011). In our simulations, the entropy gradient is generated by the turbulent process throughout the convection zone, and the differential rotation can avoid the Taylor–Proudman constraint, which is consistent with the observations (e.g., Schou et al. 1998). Fig. 26 shows the resolution dependence of the entropy and the temperature gradient. It is clearly shown that the entropy and the temperature gradient increase with resolution. This result also indi-

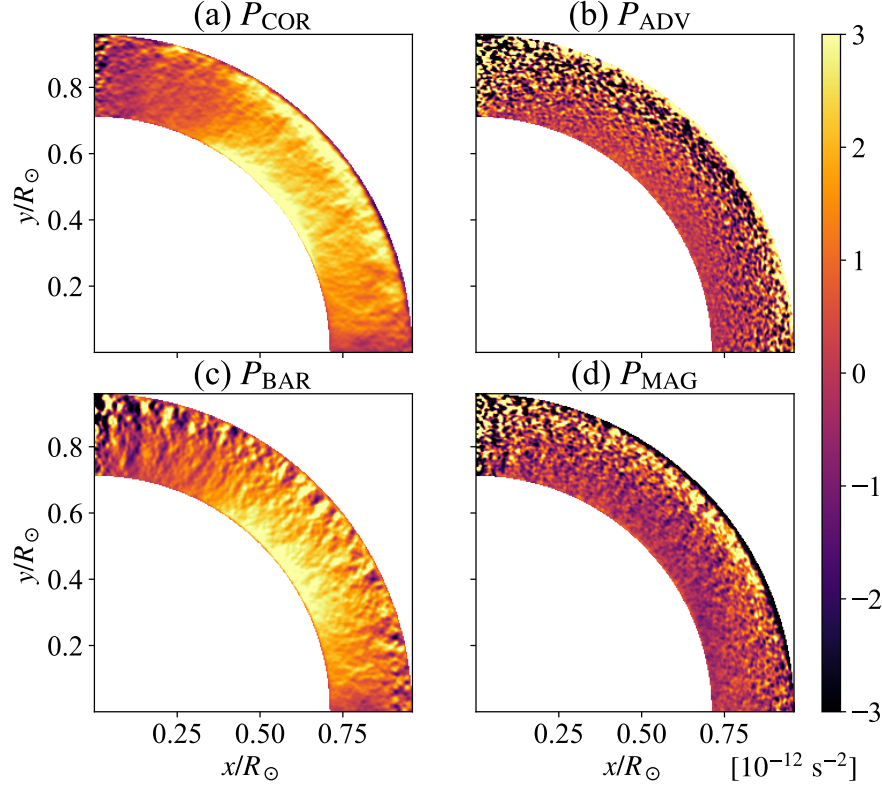


Figure 23. Each term in the vorticity equation is shown.

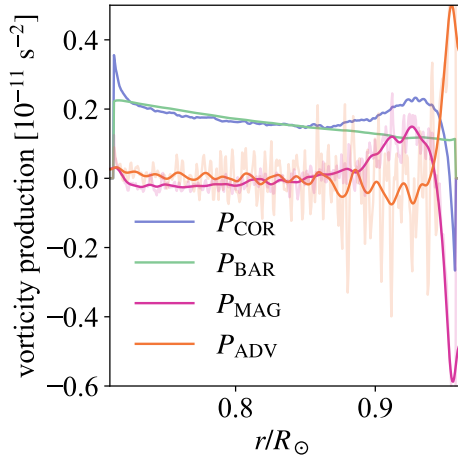


Figure 24. The blue (P_{COR}), green (P_{BAR}), magenta (P_{MAG}), and orange (P_{ADV}) lines show the spherically averaged terms in the vorticity equation. The transparent lines indicate the raw data without radial filtering.

cates that the magnetic field maintains the entropy and temperature gradients because the magnetic strength increases with the resolution. The temperature difference between the

equator and the pole at the base of the convection zone is 8 K in the High case. This value corresponds to the AB3 case in Miesch et al. (2006) with which they argue their most solar-like profile.

3.8. Angular momentum transport

This subsection discusses the angular momentum transport, and we explain why the equator is rotating faster than the polar region. To discuss the angular momentum transport, we should start from the angular momentum conservation law that is approximated as

$$\frac{\partial}{\partial t} (\rho_0 \langle \mathcal{L} \rangle) = G_{\text{REY}} + G_{\text{MER}} + G_{\text{MAG}}, \quad (39)$$

where

$$G_{\text{REY}} = -\nabla \cdot (\rho_0 \lambda \langle \mathbf{v}'_{\text{m}} v'_{\phi} \rangle), \quad (40)$$

$$G_{\text{MER}} = -\nabla \cdot (\rho_0 \langle \mathbf{v}_{\text{m}} \rangle \langle \mathcal{L} \rangle), \quad (41)$$

$$G_{\text{MAG}} = -\nabla \cdot \left(\lambda \frac{\langle \mathbf{B}_{\text{m}} B_{\phi} \rangle}{4\pi} \right), \quad (42)$$

and $\lambda = r \sin \theta$. $\mathcal{L} = \lambda u_{\phi} = \lambda v_{\phi} + \lambda^2 \Omega_0$ is the specific angular momentum. G_{REY} , G_{MER} , and G_{MAG} are the angular momentum by the

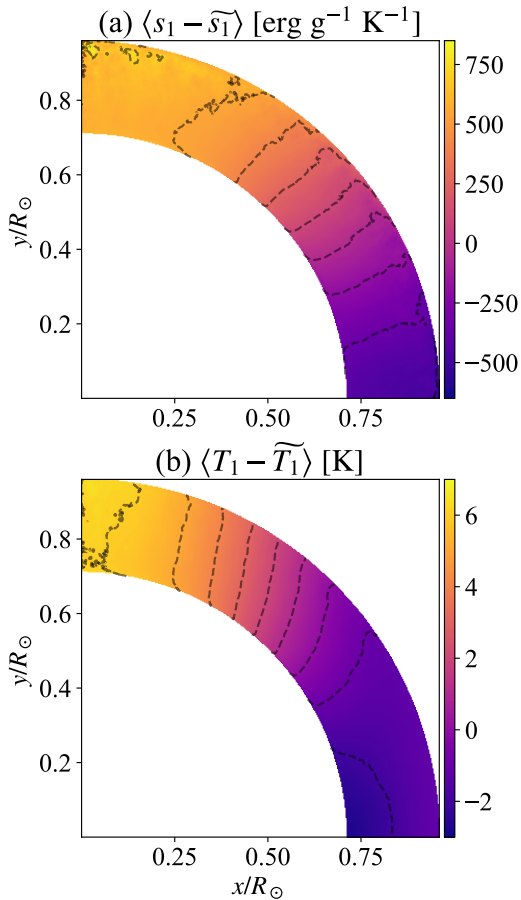


Figure 25. (a) $\langle s_1 - \widetilde{s}_1 \rangle$ and (b) $\langle T_1 - \widetilde{T}_1 \rangle$ in the High case are shown. $\langle \rangle$ and $\widetilde{}$ indicate the longitudinal average and the spherical average, respectively (see eqs. (9) and (22)).

turbulence, mean flow (meridional flow), and magnetic field. We define $\mathbf{B}_m = B_r \mathbf{e}_r + B_\theta \mathbf{e}_\theta$. Because the large-scale magnetic field $\langle \mathbf{B} \rangle$ is weak in this study, we do not divide the magnetic contribution G_{MAG} to turbulent component \mathbf{B}' and large-scale component $\langle \mathbf{B} \rangle$.

At first, we discuss how to transport the angular momentum equatorward in the High (and Middle) cases. To this end, we evaluate the temporal evolution of the latitudinal angular momentum flux density at $\theta = \pi/4$. The latitudinal angular momentum flux densities are:

$$F_{\text{tur}} = \rho_0 \lambda \langle v'_\theta v'_\phi \rangle, \quad (43)$$

$$F_{\text{mer}} = \rho_0 \langle v_\theta \rangle \langle \mathcal{L} \rangle, \quad (44)$$

$$F_{\text{mag}} = \lambda \frac{\langle B_\theta B_\phi \rangle}{4\pi}, \quad (45)$$

$$F_{\text{tot}} = F_{\text{tur}} + F_{\text{mer}} + F_{\text{mag}}. \quad (46)$$

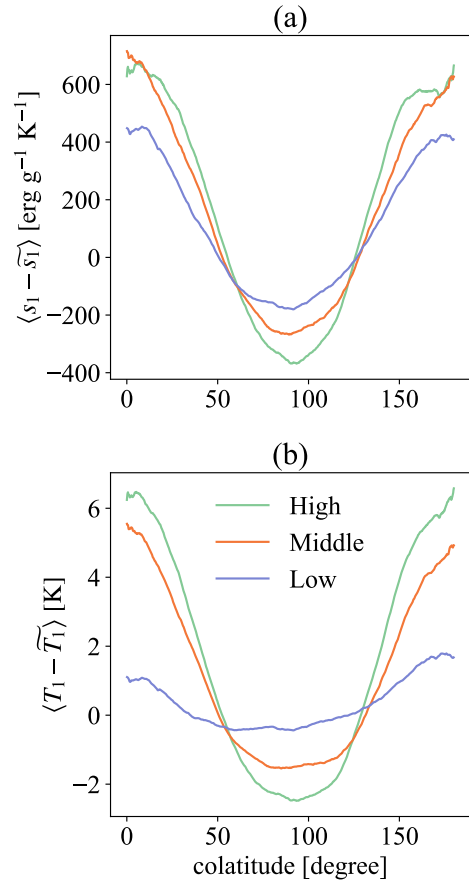


Figure 26. Latitudinal dependence of (a) entropy and (b) temperature. The deviation from the spherical averaged longitudinally.

These fluxes are radially averaged at $\theta = \pi/4$ in Fig. 27. Although the turbulent angular momentum transport (orange line: F_{tur}) is positive (equatorward) in all cases, the resulting differential rotation is different in all cases. This indicates that the equatorward angular momentum transport cannot be the reason why we have the fast equator in the High case. A prominent difference can be seen in the angular momentum transport by the meridional flow (blue line: F_{mer}). F_{mer} is negative (poleward) in the initial phase (< 600 day) in all cases. This poleward angular momentum transport leads to the fast pole in the initial phase (see Fig. 35 in Appendix C). While F_{mer} stays almost negative in the Low case, the other cases clearly show positive F_{mer} in the latter phase. This is the reason why we have a fast equator in the Middle and High cases. Because of the low Mach number situa-

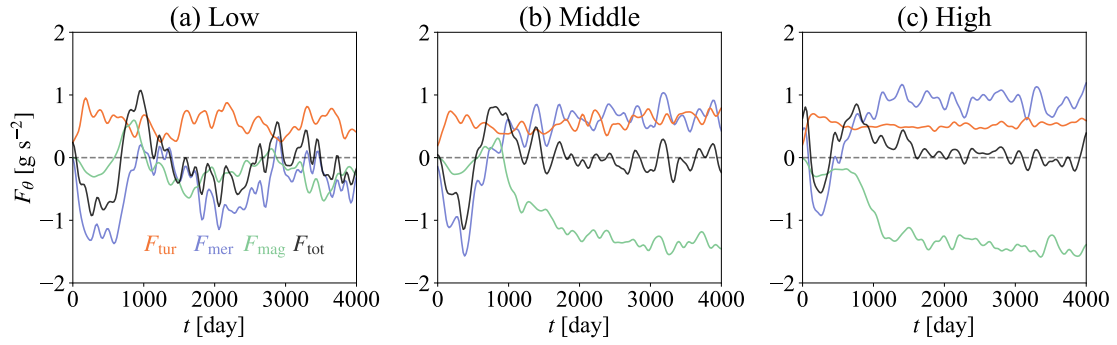


Figure 27. Radially averaged latitudinal angular momentum flux at $\theta = \pi/4$ is shown. Panels a, b, and c show the results from Low, Middle, and High cases, respectively. The orange, blue, green, and black lines show the turbulent F_{tur} , meridional flow F_{mer} , magnetic F_{mag} , and total F_{tot} angular momentum fluxes, respectively. For the definition of the angular momentum of transport, see eqs. (43) to (46). We use a Gaussian filter with 60-day width to reduce the realization noise.

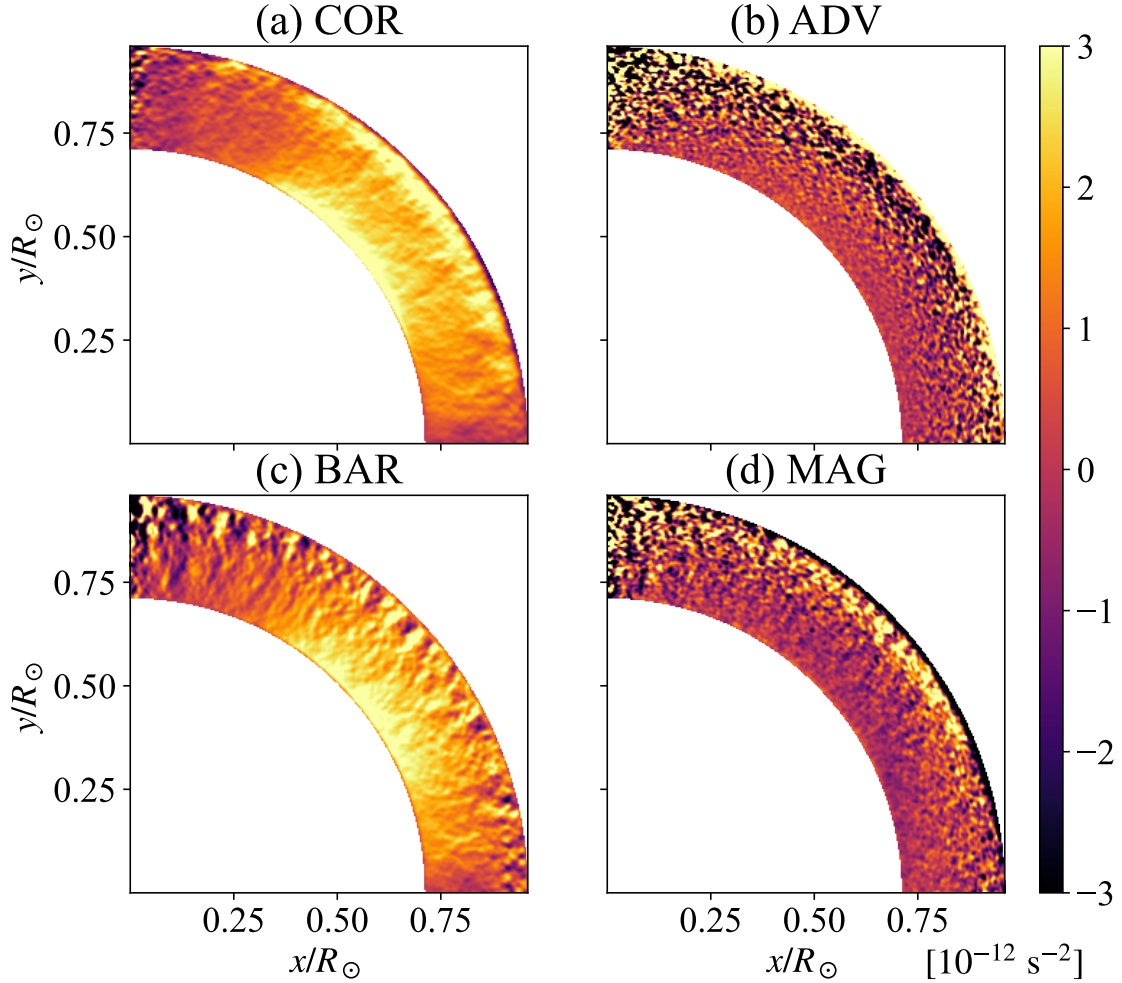


Figure 28. Each term in gyroscopic pumping is shown. The left, middle, and right columns show the results from Low, Middle, and High cases, respectively. The top, middle, and low rows show G_{GREY} , G_{MER} , and G_{MAG} , respectively.

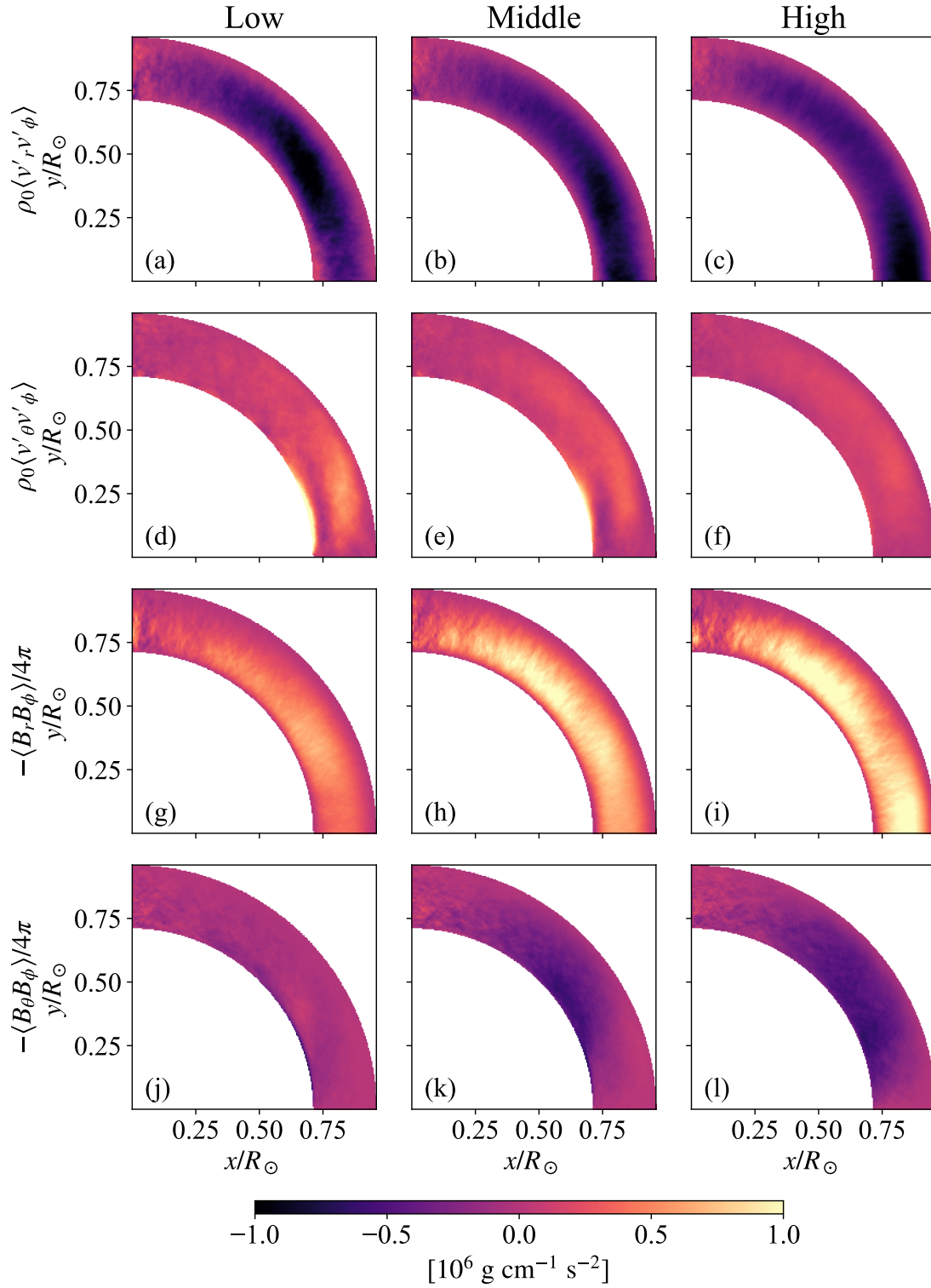


Figure 29. Correlations for the angular momentum transport are shown. The left, middle, and right columns show the results from Low, Middle, and High cases, respectively. The first, second, third, and fourth rows show $\rho_0 \langle v'_r v'_\phi \rangle$, $\rho_0 \langle v'_\theta v'_\phi \rangle$, $-\langle B_r B_\phi \rangle / 4\pi$, and $-\langle B_\theta B_\phi \rangle / 4\pi$, respectively.

tion, $\nabla \cdot (\rho_0 \mathbf{v}_m) = 0$ is approximately satisfied. This leads to $\int \rho_0 v_\theta r dr \sim 0$ at an arbitrary latitude with the closed boundary condition for the radial velocity. Because the specific angular momentum is

$$\langle \mathcal{L} \rangle = r^2 \sin^2 \theta (\langle \Omega_1 \rangle + \Omega_0), \quad (47)$$

deeper layers (small r) tend to have smaller angular momentum than near-surface layers (large r). This means that the prominent poleward meridional flow around the base of the convection zone results in the equatorward angular momentum transport because the flow required equatorward return flow in the middle of the convection zone. The poleward meridional flow around the base of the convection zone is the primary reason why we have the fast equator in the High case.

Gyroscopic pumping is useful in understanding the maintenance mechanism of the meridional flow. Gyroscopic pumping is the angular momentum conservation law in a steady-state.

$$\rho_0 \langle \mathbf{v}_m \rangle \cdot \nabla \langle \mathcal{L} \rangle \sim -\nabla \cdot \left(\rho_0 \lambda \langle \mathbf{v}'_m v'_\phi \rangle + \lambda \frac{\langle \mathbf{B}_m B_\phi \rangle}{4\pi} \right) \quad (48)$$

In this study and the solar case, the differential rotation is weak, i.e., $\Omega_1/\Omega_0 \sim 0.1$ and the angular momentum $\langle \mathcal{L} \rangle$ does not change significantly even after the differential rotation is constructed. Thus, the gyroscopic pumping indicates that the angular momentum transport by the Reynolds stress and the magnetic field determines the topology of the meridional flow. Fig. 28 shows each term in eq. (39). From this figure, we can discuss two topics: one is the generation mechanism of the poleward meridional flow around the base of the convection zone, and the other is the acceleration mechanism of the near-surface equator.

At first, we discuss the generation mechanism of the meridional flow. Because of the poleward meridional flow around the base of the convection zone, the angular momentum increases (Figs. 28e and f). This is compensated for by the magnetic angular momentum transport (G_{MAG} : Figs. 28h and i). In other words, the poleward meridional flow around the base of the convection zone is maintained by the magnetic angular momentum transport. The magnetic angular momentum transport decreases the angular momentum around the base of the

convection zone, and the poleward meridional flow increases it as compensation. While the turbulent angular momentum transport tends to increase the angular momentum around the base of the convection zone (Figs. 28a, b, and c), this is not enough to compensate for the decrease by the magnetic angular momentum transport (see also Fig. 34 for the sum of G_{REY} and G_{MER}).

As for the increase of the angular velocity in the near-surface equator, the magnetic angular momentum has the main contribution. The major difference in the differential rotation between the Middle and High cases is the angular velocity in the near-surface equator (Fig. 10). The High case has a large angular velocity there, which is more consistent with the solar observation. It is apparent that this increase in the angular velocity in the High case is caused by the magnetic angular momentum transport (G_{MAG} : Fig. 28i). In all cases, the near-surface equator is accelerated by G_{MAG} , but the amplitude of G_{MAG} increases because the magnetic field strength increases with the resolution (see Subsection 3.5).

In summary, the equatorward latitudinal angular momentum transport is done by the meridional flow constructed by the magnetic angular momentum transport. To have the large angular velocity in the near-surface equator, we need additional contributions by the magnetic field, which is stronger in the higher resolutions. For the angular momentum transport, both the strength and correlation are important. We analyze the result in this regard in the following paragraph.

Fig. 29 shows the correlation between the velocities and the magnetic fields. For both the Reynolds stress $\langle v'_i v'_j \rangle$ and the Maxwell stress $\langle B_i B_j \rangle$, the main contribution is the radial transport. The distributions of G_{REY} and G_{MAG} are roughly explained by the radial angular momentum transport. The Reynolds stress transports the angular momentum radially inward, while the Maxwell stress transports it in the opposite direction. The radially inward angular momentum transport is a usual result with a high Rossby number (weak rotational influence) situation (see Gastine et al. 2013; Featherstone & Miesch 2015; Hotta et al. 2015a). As explained in the previous paragraph, the essential reason for the poleward meridional flow around the base of the convec-

tion zone and the large angular velocity around the near-surface equator is the magnetic angular momentum transport. Fig. 29 shows that the negative correlation $\langle B_r B_\phi \rangle$, i.e., the radially outward magnetic angular momentum transport, is responsible for both of these. The radially outward transport decreases and increases the angular momentum at the base and the top of the convection zone, respectively.

The main possible reasons for the magnetic field correlation are the shear and the alignment to the flow. The shear term of the induction equation is written as

$$\frac{\partial B_r}{\partial t} = \frac{B_\phi}{r \sin \theta} \frac{\partial v_r}{\partial \phi} + [\dots], \quad (49)$$

$$\frac{\partial B_\phi}{\partial t} = B_r \frac{\partial v_\phi}{\partial r} + [\dots]. \quad (50)$$

Thus, the shear of the flow can correlate the magnetic field components. In addition, the magnetic induction equation in high conductivity limit is

$$\frac{\partial \mathbf{B}}{\partial t} = \nabla \times (\mathbf{v} \times \mathbf{B}). \quad (51)$$

This means that when the magnetic field is parallel to the velocity, $\mathbf{v} \times \mathbf{B} = 0$ and the magnetic field does not evolve more. Conversely, the magnetic field tends to be parallel to the velocity. To understand the origin of the negative correlation of $\langle B_r B_\phi \rangle$, Fig. 30 shows the PDF of (a) $B_r B_\phi$ vs. $\partial v_r / \partial \phi / r \sin \theta$, (b) $B_r B_\phi$ vs. $\partial v_\phi / \partial r$, and (c) $B_r B_\phi$ vs. $v'_r v'_\phi$ at $r = 0.9 R_\odot$ in the High case. While we do not see clear correlation between $B_r B_\phi$ and shears (Figs. 30a and b), $B_r B_\phi$ and $v'_r v'_\phi$ correlate well. This indicates that the origin of the negative $\langle B_r B_\phi \rangle$ is not the flow shear but the negative correlation of velocities $\langle v'_r v'_\phi \rangle$. Figs. 29a, b, and c show that $\langle v'_r v'_\phi \rangle$ is negative at all latitudes. This is caused by the Coriolis force. The Coriolis force in the longitudinal equation of motion is

$$\frac{\partial v_\phi}{\partial t} = [\dots] - 2\Omega_0 (v_r \sin \theta + v_\theta \cos \theta). \quad (52)$$

Thus, the radial velocity, which is the source of the thermal convection, is bent by the Coriolis force and the negative $\langle v'_r v'_\phi \rangle$ is caused. Because the magnetic induction equation only suggests that the magnetic field tends to be parallel to the velocity, it is possible that $\langle B_r B_\phi \rangle$ is the origin of the $\langle v'_r v'_\phi \rangle$. To confirm the origin of $\langle v'_r v'_\phi \rangle$, we compare the hydro

case (High-HD) and the magnetic case (High) in Fig. 31 with PDFs. Fig. 31 shows PDFs of (a) v'_r vs. v'_ϕ , (b) B_r and B_ϕ from the High case are shown. Fig. 31c shows the correlation of v'_r vs. v'_ϕ from the High-HD case. Even in the hydro case, we see a similar correlation between v'_r and v'_ϕ (Fig. 31c) to the magnetic case (Fig. 31a). This result shows that the magnetic field is not the main origin of $\langle v'_r v'_\phi \rangle$, but the velocity is the origin of $\langle B_r B_\phi \rangle$.

4. SUMMARY AND DISCUSSION

We analyze the simulation data of Hotta & Kusano (2021) in which the solar-like differential rotation, i.e., the fast equator and the slow pole, is presented. Fig. 32 summarizes our revealed processes for the fast equator. (a) High resolution suppresses numerical diffusion and enhances the amplification of the magnetic field. The compression is the main mechanism to generate the superequipartition magnetic field. Because the strong magnetic field is balanced with the gas pressure, the internal energy is available for amplification. (b) The Coriolis force causes the negative correlation of velocities $\langle v'_r v'_\phi \rangle$, which is typical in the large Rossby number regime. (c) The magnetic field tends to be parallel to the flow and also has a negative correlation $\langle B_r B_\phi \rangle < 0$. This transports the angular momentum radially outward. We can simply think that the radially outward magnetic angular momentum transport is the back reaction to the Coriolis force. We call it the *Punching ball* effect because the magnetic field behaves as if it is being punched by the Coriolis force. The *Punching ball* effect is the essential process and our new finding for the fast equator. (d) Because of the radially outward angular momentum transport, the angular momentum around the base of the convection zone decreases. To compensate for the decrease, the meridional flow becomes poleward around the base of the convection zone. To satisfy the mass conservation, an equatorward meridional flow at the middle of the convection zone is caused. Because the specific angular momentum is larger at the middle of the convection zone than at the base with the same latitude, the equatorward flow leads to the net equatorward angular momentum transport by the meridional flow. (e) Both the Maxwell stress (panel c) and the meridional flow (panel d) are essential to the fast equa-

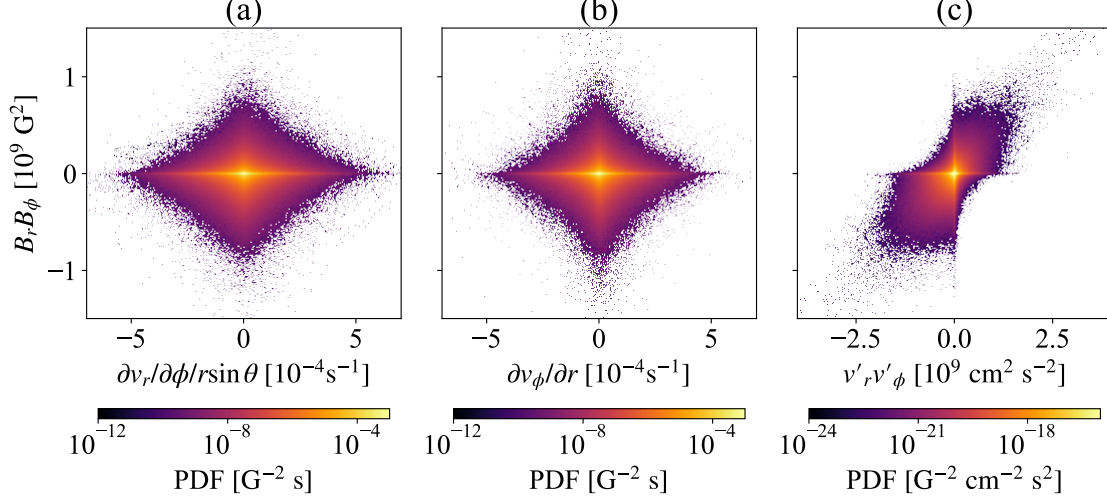


Figure 30. 2D PDFs of (a) $B_r B_\phi$ vs. $\partial v_r / \partial \phi / r \sin \theta$, (b) $B_r B_\phi$ vs. $\partial v_\theta / \partial r$, and (c) $B_r B_\phi$ vs. $v'_r v'_\phi$ at $r = 0.9 R_\odot$ in the High case, are shown.

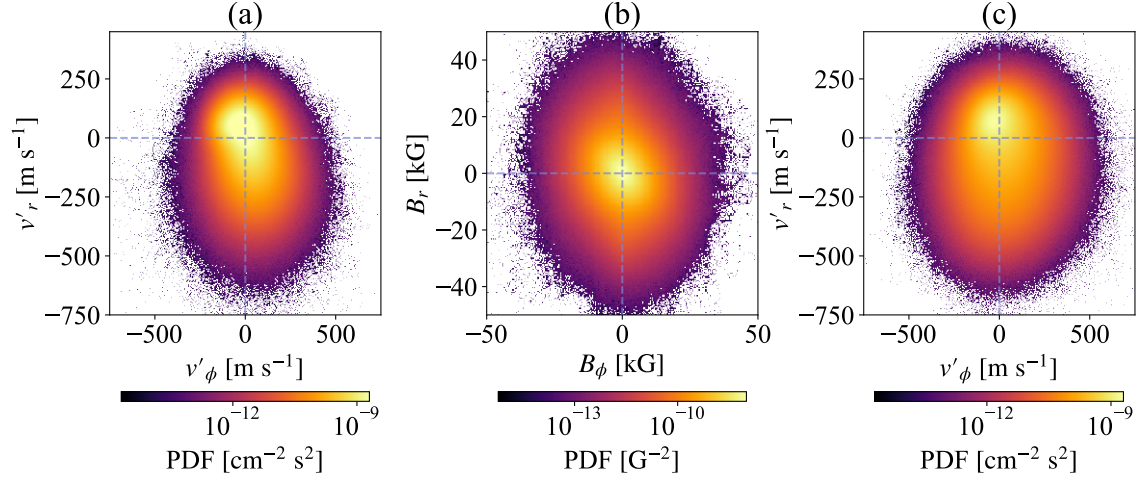


Figure 31. Correlations of (a) v'_r vs. v'_ϕ , (b) B_r and B_ϕ from the High case are shown. Panel c shows the correlation of v'_r vs. v'_ϕ from the High-HD case. All the data are at $r = 0.9 R_\odot$.

tor in the near-surface layer. A prominent difference between the Middle and High cases is the angular velocity at the near-surface equator (see Figs. 10b and c). This difference is caused by the magnetic field strength in these two cases. In conclusion, we suggest that the magnetic field has two roles in the construction of differential rotation. One is the maintenance of the meridional flow, the other is the angular momentum transport to maintain the fast near-surface equator.

In the following subsections, we discuss the remaining issues and our future perspective in several aspects.

4.1. Magnetic field intensification

In this study, compression is an important process to amplify the magnetic field. In the process, we can use the internal energy, which is about 10^6 times larger than the kinetic energy in the deep convection zone. We have not reached numerical convergence, i.e., higher resolutions show stronger magnetic field (see Fig. 8b). Currently, we cannot conclude the magnetic field strength in the real Sun, but it is most probably stronger than our simulation result. The strength may be determined by a balance between the generation of compression and the destruction by the small-scale turbulence. At the same time, we do not expect that the magnetic field strength in the real Sun is much stronger than our simulation because our

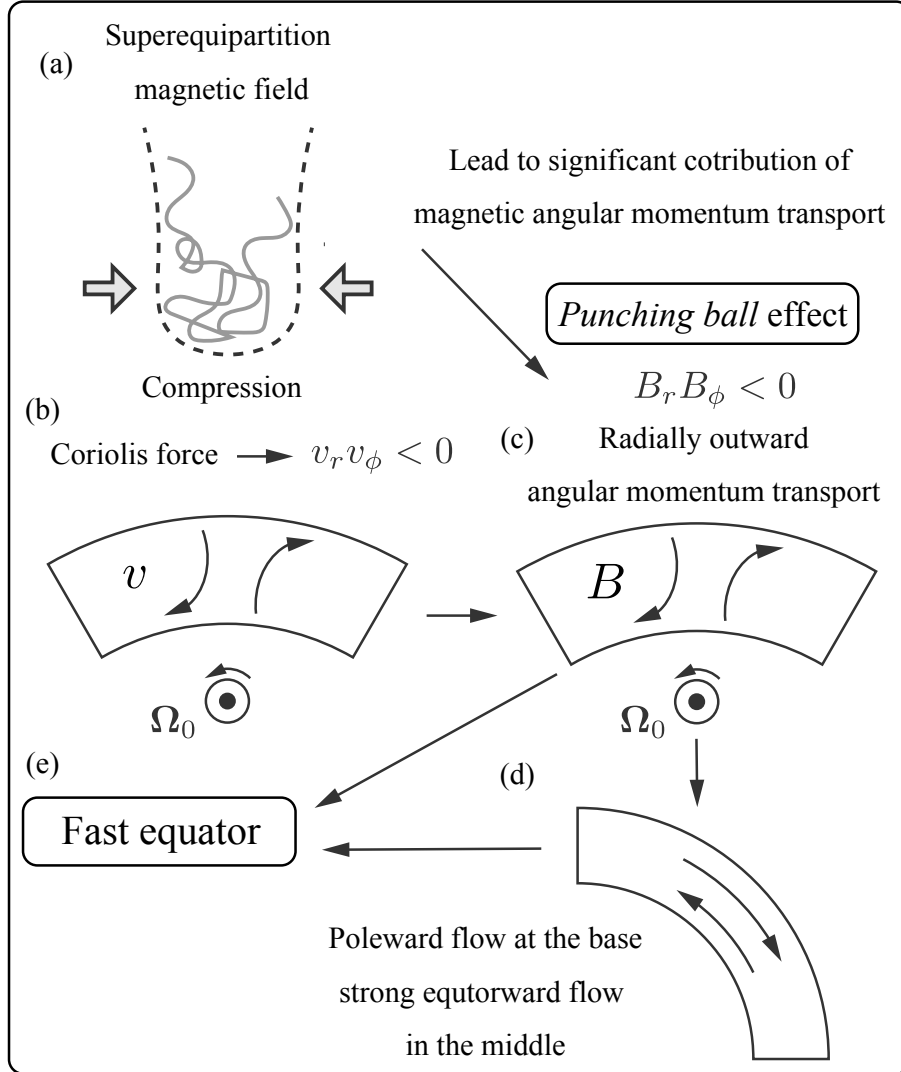


Figure 32. Summary explanation of the process for the fast equator.

differential rotation is similar to the observational results. In our simulation, the magnetic field directly determines the differential rotation topology. If our magnetic field strength is completely different from reality, the differential rotation is also away from reality. This is not the case in the simulation. We need to perform higher-resolution simulations to reach numerical convergence and to understand magnetic field strength in reality.

4.2. Convection suppression

Fig. 33 shows a comparison of kinetic energy spectra of the longitudinal velocity E_ϕ between simulations and an observation. We follow the definition of the spectra of Gizon &

Birch (2012), where

$$\frac{\int_V v_\phi^2 / 2 dV}{\int_V dV} = \sum_{\ell > 0} \frac{E_\phi}{r}. \quad (53)$$

To exclude the contribution of the differential rotation, we exclude $m = 0$ mode, where m is the azimuthal wavenumber. The integration is carried out in the whole computational domain. The magenta line shows the result from the High case in this study. The blue line shows the result from Hotta et al. (2019). In the calculation, the horizontal extent is restricted to 200 Mm, but it covers the whole convection zone vertically from the base to the photosphere. As suggested by Hotta et al. (2019), the existence of the photosphere does not change the energy spectra in deeper lay-

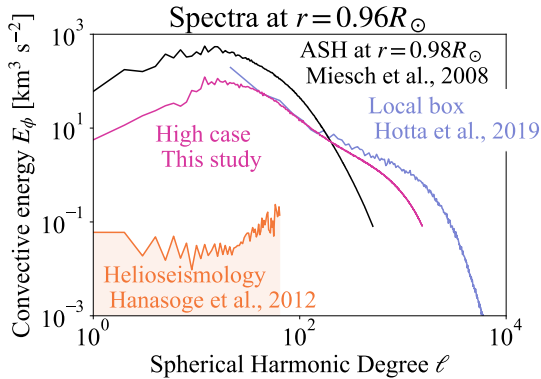


Figure 33. Comparison of kinetic energy spectra E_ϕ of longitudinal solar velocities in simulations and an observation. We show data from the local helioseismology (Hanasoge et al. 2012, orange), ASH simulation as $r = 0.98R_\odot$ (Miesch et al. 2008, black), a local calculation (Hotta et al. 2019, blue), and the High case in this study (magenta). Except for the ASH simulation, we show the energy spectra at $r = 0.96R_\odot$.

ers, and the magenta and blue lines are consistent. The black line shows the result from another global calculation (Miesch et al. 2008) at $r = 0.98R_\odot$. The orange line indicates the upper limit suggested by the local helioseismology (Hanasoge et al. 2012). While we still have a large discrepancy between the simulation and the observation, the difference is relaxed. In our simulation, the large-scale convection is suppressed because the small-scale turbulence can efficiently transport the energy. Also, in this regard, the higher resolution possibly changes the result more. Meanwhile, recently, the helioseismology results have been revised (Proxauf 2021). Our simulation results in the High case are highly consistent with the revised result of Greer et al. (2015). Currently, we cannot conclude if our convective velocity is correct or not. A more detailed comparison between simulations and observation is needed.

Miesch et al. (2012) evaluate the lower limit of the convective velocity from the dynamical balance for the differential rotation. The evaluated value is not consistent with the local helioseismology (Hanasoge et al. 2012). In their study, they do not consider the magnetic contribution for the construction of the differential rotation. In this study, we find that the magnetic field is a dominant contribution. This means that the convection velocity has large

freedom. The Rossby number does not solely determine the differential rotation. One remaining restriction on the convection velocity is the energy flux. The solar luminosity L_\odot is determined; thus, there should be a lower limit on the convection velocity to transport the required energy. Our simulation also shows that the temperature perturbation increases with the resolution. If the temperature perturbation increases, the lower limit on the convective velocity should be relaxed. At the same time, significantly large temperature perturbation should be detected by the local helioseismology with mean travel time. Future observations for the convection velocity as well as the temperature perturbation will contribute to solving the problem.

4.3. Meridional flow

Currently, the local helioseismology for the meridional flow is still controversial. Zhao et al. (2013) indicate the double cell flow with the poleward meridional flow around the base of the convection zone. On the other hand, Gizon et al. (2020) show equatorward meridional flow around the base. In this regard, our result is more consistent with Zhao et al. (2013)’s result. We should note that observations still have tiny sensitivity in the deep convection zone because it requires long enough separated two endpoints of $\Delta \sim 45$ degree for evaluating the travel time (Giles 2000). The observation has not accomplished enough precise observations for these separated two endpoints. For example, Gizon et al. (2020) show meridional flow results with and without the data with $\Delta > 30$ degree, but the result does not change. This indicates that the data with $\Delta > 30$ degree are not used for their inversion because of the large error, and the equatorward meridional flow is caused by the constraint of the mass conservation. This result indicates that we cannot conclude that our meridional flow is inconsistent with Gizon et al. (2020)’s result. We need observations from different viewing angles, such as the Solar Orbiter (Müller et al. 2013) to understand the whole topology of the meridional flow, which should be of significant impact on the understanding of the convection and magnetic fields in the solar convection zone.

1 The authors thank Y. Bekki and K. Mori
 2 for their comments on the manuscript. H.H.
 3 is supported by JSPS KAKENHI grants
 4 No. JP20K14510, JP21H04492, JP21H01124,
 5 JP21H04497, and MEXT as a Program for
 6 Promoting Researches on the Supercomputer
 7 Fugaku (Toward a unified view of the universe:
 8 from large-scale structures to planets, grant
 9 no. 20351188). The results were obtained
 10 using the Supercomputer Fugaku provided by
 11 the RIKEN Center for Computational Science.
 12 The authors are grateful to Rachel Howe for
 13 giving us the HMI inversion data for the solar
 14 differential rotation, S. Hanasoge, and M.
 15 Miesch for providing the spectral data.

Software: R2D2 (Hotta et al. 2019; Hotta
& Iijima 2020; Hotta & Kusano 2021)

REFERENCES

- Bekki, Y., Hotta, H., & Yokoyama, T. 2017, ApJ, 851, 74, doi: [10.3847/1538-4357/aa9b7f](https://doi.org/10.3847/1538-4357/aa9b7f)
- Biermann, L. 1948, ZA, 25, 135
- Brown, B. P., Browning, M. K., Brun, A. S., Miesch, M. S., & Toomre, J. 2008, ApJ, 689, 1354, doi: [10.1086/592397](https://doi.org/10.1086/592397)
- Brun, A. S., Miesch, M. S., & Toomre, J. 2004, ApJ, 614, 1073, doi: [10.1086/423835](https://doi.org/10.1086/423835)
- . 2011, ApJ, 742, 79, doi: [10.1088/0004-637X/742/2/79](https://doi.org/10.1088/0004-637X/742/2/79)
- Brun, A. S., & Toomre, J. 2002, ApJ, 570, 865, doi: [10.1086/339228](https://doi.org/10.1086/339228)
- Christensen-Dalsgaard, J., Dappen, W., Ajukov, S. V., et al. 1996, Science, 272, 1286, doi: [10.1126/science.272.5266.1286](https://doi.org/10.1126/science.272.5266.1286)
- Fan, Y., & Fang, F. 2014, ApJ, 789, 35, doi: [10.1088/0004-637X/789/1/35](https://doi.org/10.1088/0004-637X/789/1/35)
- Featherstone, N. A., & Miesch, M. S. 2015, ApJ, 804, 67, doi: [10.1088/0004-637X/804/1/67](https://doi.org/10.1088/0004-637X/804/1/67)
- Gastine, T., Wicht, J., & Aurnou, J. M. 2013, Icarus, 225, 156, doi: [10.1016/j.icarus.2013.02.031](https://doi.org/10.1016/j.icarus.2013.02.031)
- Giles, P. M. 2000, PhD thesis, STANFORD UNIVERSITY
- Gilman, P. A. 1977, Geophysical and Astrophysical Fluid Dynamics, 8, 93, doi: [10.1080/03091927708240373](https://doi.org/10.1080/03091927708240373)
- Gizon, L., & Birch, A. C. 2012, Proceedings of the National Academy of Science, 109, 11896, doi: [10.1073/pnas.1208875109](https://doi.org/10.1073/pnas.1208875109)
- Gizon, L., Cameron, R. H., Pourabdian, M., et al. 2020, Science, 368, 1469, doi: [10.1126/science.aaz7119](https://doi.org/10.1126/science.aaz7119)
- Greer, B. J., Hindman, B. W., Featherstone, N. A., & Toomre, J. 2015, ApJL, 803, L17, doi: [10.1088/2041-8205/803/2/L17](https://doi.org/10.1088/2041-8205/803/2/L17)
- Hanasoge, S. M., Duvall, T. L., & Sreenivasan, K. R. 2012, Proceedings of the National Academy of Science, 109, 11928, doi: [10.1073/pnas.1206570109](https://doi.org/10.1073/pnas.1206570109)
- Hotta, H. 2017, ApJ, 843, 52, doi: [10.3847/1538-4357/aa784b](https://doi.org/10.3847/1538-4357/aa784b)
- . 2018, ApJL, 860, L24, doi: [10.3847/2041-8213/aacafb](https://doi.org/10.3847/2041-8213/aacafb)
- Hotta, H., & Iijima, H. 2020, MNRAS, 494, 2523, doi: [10.1093/mnras/staa844](https://doi.org/10.1093/mnras/staa844)
- Hotta, H., Iijima, H., & Kusano, K. 2019, Science Advances, 5, eaau2307, doi: [10.1126/sciadv.aau2307](https://doi.org/10.1126/sciadv.aau2307)
- Hotta, H., & Kusano, K. 2021, Nature Astronomy, 5, 1100, doi: [10.1038/s41550-021-01459-0](https://doi.org/10.1038/s41550-021-01459-0)
- Hotta, H., Rempel, M., & Yokoyama, T. 2012a, ApJL, 759, L24, doi: [10.1088/2041-8205/759/1/L24](https://doi.org/10.1088/2041-8205/759/1/L24)
- . 2014, ApJ, 786, 24, doi: [10.1088/0004-637X/786/1/24](https://doi.org/10.1088/0004-637X/786/1/24)
- . 2015a, ApJ, 798, 51, doi: [10.1088/0004-637X/798/1/51](https://doi.org/10.1088/0004-637X/798/1/51)
- . 2015b, ApJ, 803, 42, doi: [10.1088/0004-637X/803/1/42](https://doi.org/10.1088/0004-637X/803/1/42)

- . 2016, *Science*, 351, 1427, doi: [10.1126/science.aad1893](https://doi.org/10.1126/science.aad1893)
- Hotta, H., Rempel, M., Yokoyama, T., Iida, Y., & Fan, Y. 2012b, *A&A*, 539, A30, doi: [10.1051/0004-6361/201118268](https://doi.org/10.1051/0004-6361/201118268)
- Howard, R., & Harvey, J. 1970, *SoPh*, 12, 23, doi: [10.1007/BF02276562](https://doi.org/10.1007/BF02276562)
- Howe, R., Larson, T. P., Schou, J., et al. 2011, in *Journal of Physics Conference Series*, Vol. 271, GONG-SoHO 24: A New Era of Seismology of the Sun and Solar-Like Stars, 012061, doi: [10.1088/1742-6596/271/1/012061](https://doi.org/10.1088/1742-6596/271/1/012061)
- Kageyama, A., & Sato, T. 2004, *Geochemistry, Geophysics, Geosystems*, 5, Q09005, doi: [10.1029/2004GC000734](https://doi.org/10.1029/2004GC000734)
- Käpylä, P. J. 2019, *A&A*, 631, A122, doi: [10.1051/0004-6361/201834921](https://doi.org/10.1051/0004-6361/201834921)
- Käpylä, P. J., Käpylä, M. J., & Brandenburg, A. 2014, *A&A*, 570, A43, doi: [10.1051/0004-6361/201423412](https://doi.org/10.1051/0004-6361/201423412)
- Lord, J. W., Cameron, R. H., Rast, M. P., Rempel, M., & Roudier, T. 2014, *ApJ*, 793, 24, doi: [10.1088/0004-637X/793/1/24](https://doi.org/10.1088/0004-637X/793/1/24)
- Miesch, M. S. 2005, *Living Reviews in Solar Physics*, 2, 1, doi: [10.12942/lrsp-2005-1](https://doi.org/10.12942/lrsp-2005-1)
- Miesch, M. S., Brun, A. S., DeRosa, M. L., & Toomre, J. 2008, *ApJ*, 673, 557, doi: [10.1086/523838](https://doi.org/10.1086/523838)
- Miesch, M. S., Brun, A. S., & Toomre, J. 2006, *ApJ*, 641, 618, doi: [10.1086/499621](https://doi.org/10.1086/499621)
- Miesch, M. S., Elliott, J. R., Toomre, J., et al. 2000, *ApJ*, 532, 593, doi: [10.1086/308555](https://doi.org/10.1086/308555)
- Miesch, M. S., Featherstone, N. A., Rempel, M., & Trampedach, R. 2012, *ApJ*, 757, 128, doi: [10.1088/0004-637X/757/2/128](https://doi.org/10.1088/0004-637X/757/2/128)
- Miesch, M. S., & Hindman, B. W. 2011, *ApJ*, 743, 79, doi: [10.1088/0004-637X/743/1/79](https://doi.org/10.1088/0004-637X/743/1/79)
- Moreno-Insertis, F., Caligari, P., & Schuessler, M. 1995, *ApJ*, 452, 894, doi: [10.1086/176357](https://doi.org/10.1086/176357)
- Müller, D., Marsden, R. G., St. Cyr, O. C., & Gilbert, H. R. 2013, *SoPh*, 285, 25, doi: [10.1007/s11207-012-0085-7](https://doi.org/10.1007/s11207-012-0085-7)
- Nelson, N. J., Brown, B. P., Brun, A. S., Miesch, M. S., & Toomre, J. 2013, *ApJ*, 762, 73, doi: [10.1088/0004-637X/762/2/73](https://doi.org/10.1088/0004-637X/762/2/73)
- O'Mara, B., Miesch, M. S., Featherstone, N. A., & Augustson, K. C. 2016, *Advances in Space Research*, 58, 1475, doi: [10.1016/j.asr.2016.03.038](https://doi.org/10.1016/j.asr.2016.03.038)
- Paternò, L. 2010, *Ap&SS*, 328, 269, doi: [10.1007/s10509-009-0218-0](https://doi.org/10.1007/s10509-009-0218-0)
- Pietarila Graham, J., Cameron, R., & Schüssler, M. 2010, *ApJ*, 714, 1606, doi: [10.1088/0004-637X/714/2/1606](https://doi.org/10.1088/0004-637X/714/2/1606)
- Proxauf, B. 2021, arXiv e-prints, arXiv:2106.07251. <https://arxiv.org/abs/2106.07251>
- Rempel, M. 2005, *ApJ*, 622, 1320, doi: [10.1086/428282](https://doi.org/10.1086/428282)
- . 2014, *ApJ*, 789, 132, doi: [10.1088/0004-637X/789/2/132](https://doi.org/10.1088/0004-637X/789/2/132)
- Rempel, M., & Schüssler, M. 2001, *ApJL*, 552, L171, doi: [10.1086/320346](https://doi.org/10.1086/320346)
- Rogers, F. J., Swenson, F. J., & Iglesias, C. A. 1996, *ApJ*, 456, 902, doi: [10.1086/176705](https://doi.org/10.1086/176705)
- Schou, J., Antia, H. M., Basu, S., et al. 1998, *ApJ*, 505, 390, doi: [10.1086/306146](https://doi.org/10.1086/306146)
- Stein, R. F., & Nordlund, Å. 1998, *ApJ*, 499, 914, doi: [10.1086/305678](https://doi.org/10.1086/305678)
- Stein, R. F., & Nordlund, Å. 2002, in *ESA Special Publication*, Vol. 505, SOLMAG 2002. Proceedings of the Magnetic Coupling of the Solar Atmosphere Euroconference, ed. H. Sawaya-Lacoste, 83–89
- Vögler, A., & Schüssler, M. 2007, *A&A*, 465, L43, doi: [10.1051/0004-6361:20077253](https://doi.org/10.1051/0004-6361:20077253)
- Vögler, A., Shelyag, S., Schüssler, M., et al. 2005, *A&A*, 429, 335, doi: [10.1051/0004-6361:20041507](https://doi.org/10.1051/0004-6361:20041507)
- Zhao, J., Bogart, R. S., Kosovichev, A. G., Duvall, T. L., J., & Hartlep, T. 2013, *ApJL*, 774, L29, doi: [10.1088/2041-8205/774/2/L29](https://doi.org/10.1088/2041-8205/774/2/L29)

APPENDIX

A. STREAM FUNCTION

In this appendix, we explain our method to calculate the stream function. Because a low Mach number situation is kept in our calculation, the meridional flow $\langle \mathbf{v}_m \rangle = \langle v_r \rangle \mathbf{e}_r + \langle v_\theta \rangle \mathbf{e}_\theta$ should obey the anelastic approximation $\nabla \cdot (\rho_0 \langle \mathbf{v}_m \rangle) \sim 0$. This indicates that the meridional flow can be written as a stream function $\Psi(r, \theta)$ as follows.

$$\rho_0 \langle \mathbf{v}_m \rangle = \nabla \times (\Psi \mathbf{e}_\phi) \quad (\text{A1})$$

Taking the rotation of eq. (A1) leads to

$$\nabla \times (\rho_0 \langle \mathbf{v}_m \rangle) = -\nabla^2 (\Psi \mathbf{e}_\phi), \quad (\text{A2})$$

because $\nabla \cdot (\Psi(r, \theta) \mathbf{e}_\phi) = 0$. Thus, we need to solve the Poisson equation of

$$[\nabla \times (\rho_0 \langle \mathbf{v}_m \rangle)]_\phi = -\nabla^2 \Psi + \frac{\Psi}{r^2 \sin^2 \theta}. \quad (\text{A3})$$

The solution of the Poisson equation is a steady-state ($\partial/\partial t = 0$), and the solution of the diffusion equation with a source term is as follows

$$\frac{\partial \Psi}{\partial t} = \nabla^2 \Psi - \frac{\Psi}{r^2 \sin^2 \theta} - [\nabla \times (\rho_0 \langle \mathbf{v}_m \rangle)]_\phi. \quad (\text{A4})$$

We simply integrate eq. (A1) for the initial condition of eq. (A4). Then, we evolve eq. (A4) for several time steps, and the solution reaches a steady-state. We use the obtained value for the stream function used in Figs. 10 and 35.

B. GYROSCOPIC PUMPING

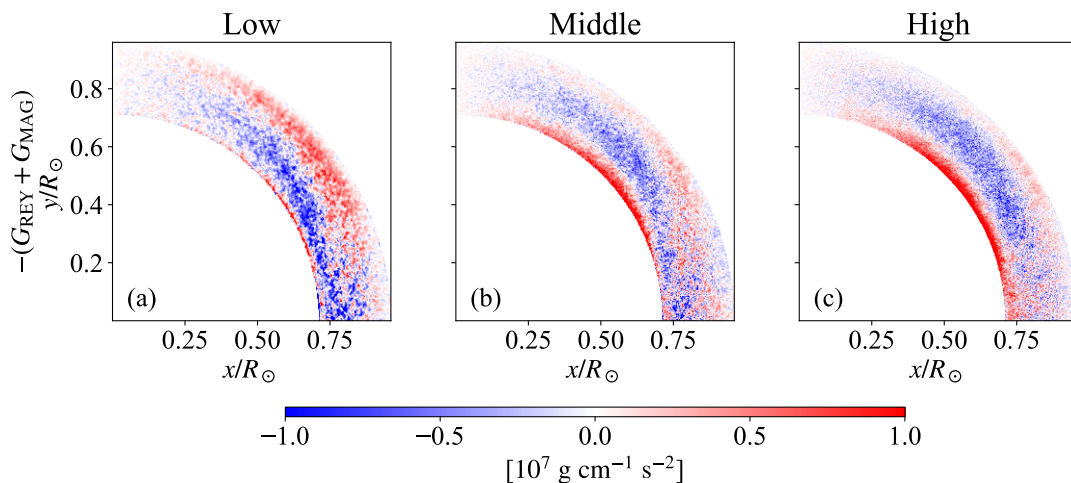


Figure 34.

Fig. 34 shows $-(G_{\text{REY}} + G_{\text{MAG}})$ (see eqs. (40) and (42) for the definitions). While these values fluctuate much because of the nature of turbulent flow and the magnetic field, we certainly confirm that $G_{\text{REY}} + G_{\text{MAG}}$ is balanced with G_{MER} (Figs. 28g, h, and i). Fig. 34 indicates that the gyroscopic pumping including the magnetic field (eq. (48)) is at least roughly accomplished in our analyzed period in all cases.

C. MEAN FLOWS IN AN INITIAL PHASE

Fig. 35 shows the differential rotation and the meridional flow in an initial phase (200–600 days). While we can reproduce the fast equator in the High case in the latter phase (Fig. 10), all cases show the fast pole in the initial phase. During the long calculation, the magnetic field evolves and is amplified, and then the fast equator is constructed in the final steady phase in the High case.

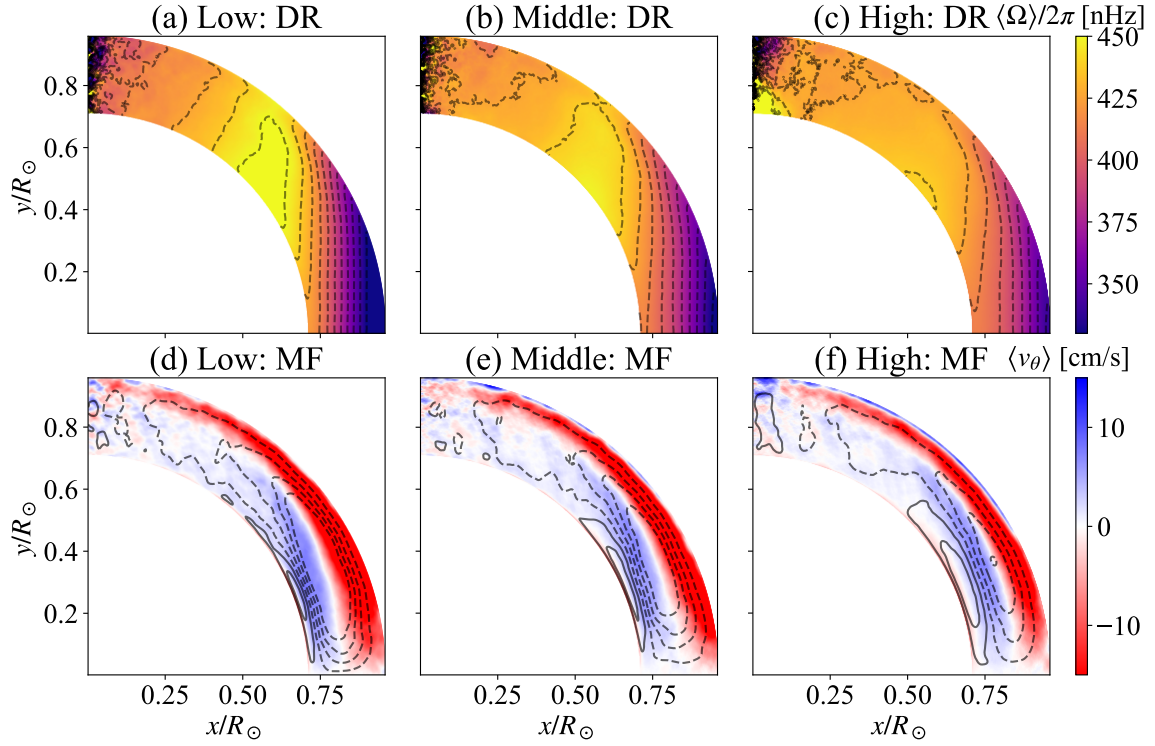


Figure 35. Format is the same as Fig. 10, but the time average is between $t = 200$ to 600 day.